

## Product datasheet for **AP52957PU-N**

### NUDCD1 (Center) Rabbit Polyclonal Antibody

#### Product data:

Product Type:	Primary Antibodies
Applications:	WB
Recommended Dilution:	<b>ELISA:</b> 1/1000. <b>Western Blot:</b> 1/100-1/500.
Reactivity:	Human
Host:	Rabbit
Isotype:	Ig
Clonality:	Polyclonal
Immunogen:	KLH conjugated synthetic peptide between 193-223 amino acids from the Central region of Human NUDCD1
Specificity:	This antibody recognizes Human NUDCD1 / CML66 (Center).
Formulation:	PBS containing 0.09% (W/V) Sodium Azide as preservative State: Aff - Purified State: Liquid purified Ig fraction
Concentration:	lot specific
Purification:	Protein A column, followed by peptide affinity purification
Conjugation:	Unconjugated
Storage:	Store undiluted at 2-8°C for one month or (in aliquots) at -20°C for longer. Avoid repeated freezing and thawing.
Stability:	Shelf life: one year from despatch.
Gene Name:	NudC domain containing 1
Database Link:	<a href="#">Entrez Gene 84955 Human Q96RS6</a>
Background:	NUDCD1 (CML66) contains 1 CS domain. It may play an oncogenic role in ways of favoring tumor cells proliferation, invasion and metastasis-associated with multiple pathways. NUDCD1 is expressed in leukemias and a variety of solid tumor cell lines. Northern blot analysis showed expression in normal tissues restricted to testis and heart, and no expression was found in hematopoietic tissues.



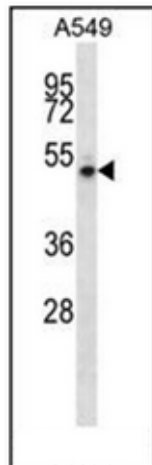
[View online »](#)

Synonyms: CML66; FLJ14991; OVA66

Note: **Molecular Weight:** 66756 Da

Protein Families: Druggable Genome

### Product images:



Western blot analysis of NUDCD1 / CML66 Antibody (Center) in A549 cell line lysates (35ug/lane). This demonstrates the NUDCD1 antibody detected the NUDCD1 protein (arrow).