

Product datasheet for **AP52955PU-N**

NUCKS1 (N-term) Rabbit Polyclonal Antibody

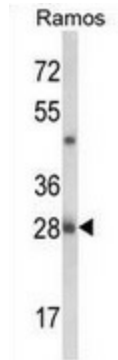
Product data:

Product Type:	Primary Antibodies
Applications:	FC, WB
Recommended Dilution:	Flow cytometry: 1/10-1/50. Western blot: 1/100-1/500. Enzyme immunoassay: 1/1000.
Reactivity:	Human
Host:	Rabbit
Isotype:	Ig
Clonality:	Polyclonal
Immunogen:	Synthetic peptide - KLH conjugated - corresponding to the N-terminal region (between 52-81aa) of human NUCKS.
Specificity:	This antibody recognizes NUCKS at N-term.
Formulation:	PBS with 0.09% (W/V) Sodium azide State: Aff - Purified State: Liquid purified Ig fraction
Concentration:	lot specific
Purification:	Purified through a Protein A column followed by peptide affinity purification
Conjugation:	Unconjugated
Storage:	Store undiluted at 2-8°C for one month or (in aliquots) at -20°C for longer. Avoid repeated freezing and thawing.
Stability:	Shelf life: one year from despatch.
Gene Name:	nuclear casein kinase and cyclin-dependent kinase substrate 1
Database Link:	Entrez Gene 64710 Human Q9H1E3
Synonyms:	NUCKS1, JC7, P1
Note:	Molecular Weight: 27296 Da
Protein Families:	Druggable Genome

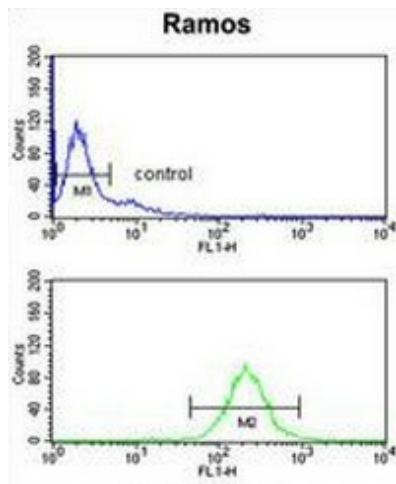


[View online »](#)

Product images:



Western blot analysis of NUCKS1 (arrow) in Ramos cell line lysates (35ug/lane) using NUCKS antibody.



Flow cytometry analysis of Ramos cells (bottom histogram) compared to a negative control cell (top histogram) using NUCKS antibody. (N-term), followed by FITC-conjugated goat-anti-rabbit secondary antibodies.