

Product datasheet for **AP52952PU-N**

NTN3 (C-term) Rabbit Polyclonal Antibody

Product data:

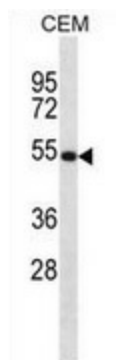
| | |
|-----------------------|--|
| Product Type: | Primary Antibodies |
| Applications: | WB |
| Recommended Dilution: | Western blot: 1/100-1/500. Enzyme immunoassay: 1/1000. |
| Reactivity: | Human |
| Host: | Rabbit |
| Isotype: | Ig |
| Clonality: | Polyclonal |
| Immunogen: | Synthetic peptide - KLH conjugated - corresponding to the C-terminal region (between 430-460aa) of human NTN3. |
| Specificity: | This antibody recognizes NTN3 at C-term. |
| Formulation: | PBS with 0.09% (W/V) Sodium azide State: Aff - Purified State: Liquid purified Ig fraction |
| Concentration: | lot specific |
| Purification: | Purified through a Protein A column followed by peptide affinity purification |
| Conjugation: | Unconjugated |
| Storage: | Store undiluted at 2-8°C for one month or (in aliquots) at -20°C for longer. Avoid repeated freezing and thawing. |
| Stability: | Shelf life: one year from despatch. |
| Gene Name: | netrin 3 |
| Database Link: | Entrez Gene 4917 Human O00634 |
| Background: | Netrins control guidance of CNS commissural axons and peripheral motor axons (By similarity). |
| Synonyms: | Netrin-3,NTN2L |
| Note: | Molecular Weight: 61466 Da |



[View online »](#)

Protein Pathways: Axon guidance

Product images:



Western blot analysis in CEM cell line lysates (35ug/lane) using NTN3 antibody. This demonstrates the NTN3 antibody detected the NTN3 protein (arrow).