

Product datasheet for **AP52951PU-N**

NTH1 (NTHL1) (Center) Rabbit Polyclonal Antibody

Product data:

Product Type:	Primary Antibodies
Applications:	WB
Recommended Dilution:	ELISA: 1/1000. Western blot: 1/100 - 1/500.
Reactivity:	Human
Host:	Rabbit
Isotype:	Ig
Clonality:	Polyclonal
Immunogen:	KLH conjugated synthetic peptide between 95-126 amino acids from the Central region of human NTHL1
Specificity:	This antibody reacts to NTHL1.
Formulation:	PBS State: Aff - Purified State: Liquid purified Ig fraction Preservative: 0.09% (W/V) sodium azide
Concentration:	lot specific
Purification:	Affinity chromatography on Protein A
Conjugation:	Unconjugated
Storage:	Store undiluted at 2-8°C for one month or (in aliquots) at -20°C for longer. Avoid repeated freezing and thawing.
Stability:	Shelf life: one year from despatch.
Predicted Protein Size:	34390 Da
Gene Name:	nth-like DNA glycosylase 1
Database Link:	Entrez Gene 4913 Human P78549



[View online »](#)

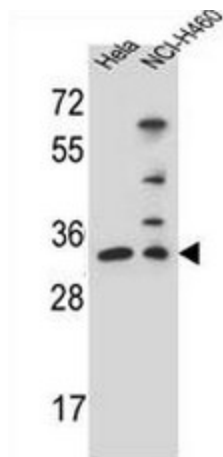
Background: The protein encoded by the NTHL1 gene is a DNA N-glycosylase of the endonuclease III family. Like a similar protein in *E. coli*, the encoded protein has DNA glycosylase activity on DNA substrates containing oxidized pyrimidine residues and has apurinic/aprimidinic lyase activity.

Synonyms: NTHL1, OCTS3

Protein Families: Druggable Genome, Stem cell - Pluripotency

Protein Pathways: Base excision repair

Product images:



NTHL1 Antibody (Center R103) western blot analysis in HeLa, NCI-H460 cell line lysates (35ug/lane). This demonstrates the NTHL1 antibody detected the NTHL1 protein (arrow).