

## Product datasheet for **AP52947PU-N**

### NT5C1B (NT5C1B-RDH14) (N-term) Rabbit Polyclonal Antibody

#### Product data:

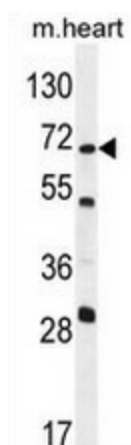
Product Type:	Primary Antibodies
Applications:	WB
Recommended Dilution:	This antibody is suitable for <b>Western blotting</b> . The suggested dilution is: 1/100-1/500.
Reactivity:	Human, Mouse
Host:	Rabbit
Isotype:	Ig
Clonality:	Polyclonal
Immunogen:	Synthetic peptide - KLH conjugated - corresponding to the N-terminal region (between 10-40aa) of human NT5C1B.
Specificity:	This antibody detects NT5C1B at N-term.
Formulation:	PBS with 0.09% (W/V) Sodium Azide. State: Aff - Purified State: Liquid purified Ig fraction
Concentration:	lot specific
Purification:	Purified through a protein A column; followed by peptide affinity purification.
Conjugation:	Unconjugated
Storage:	Store the antibody undiluted at 2-8°C for one month or (in aliquots) at -20°C for longer. Avoid repeated freezing and thawing.
Stability:	Shelf life: one year from despatch.
Gene Name:	NT5C1B-RDH14 readthrough
Database Link:	<a href="#">Entrez Gene 70881 Mouse</a> <a href="#">Entrez Gene 100526794 Human</a> <a href="#">Q96P26</a>
Background:	Cytosolic 5-prime nucleotidases, such as NT5C1B, catalyze production of adenosine, which regulates diverse physiologic processes ( <i>Sala-Newby and Newby, 2001 [PMID 11690631]</i> ).
Synonyms:	AIRP, FKSG85, cN1B
Note:	<b>Molecular Weight:</b> 68804 Da



[View online »](#)

**Protein Pathways:** Metabolic pathways, Nicotinate and nicotinamide metabolism, Purine metabolism, Pyrimidine metabolism

**Product images:**



Western blot analysis in mouse heart tissue lysates (35ug/lane) using NT5C1B antibody. (N-term). This demonstrates the NT5C1B antibody detected the NT5C1B protein (arrow).