

Product datasheet for **AP52941PU-N**

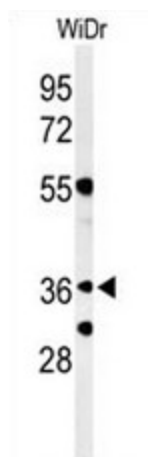
NSMCE4A (N-term) Rabbit Polyclonal Antibody

Product data:

Product Type:	Primary Antibodies
Applications:	WB
Recommended Dilution:	ELISA: 1/1000. Western blot: 1/100 - 1/500.
Reactivity:	Human
Host:	Rabbit
Isotype:	Ig
Clonality:	Polyclonal
Immunogen:	KLH conjugated synthetic peptide between 36~65 amino acids from the N-terminal region of human NSE4A
Specificity:	This antibody reacts to NSE4A.
Formulation:	PBS State: Aff - Purified State: Liquid purified Ig fraction Preservative: 0.09% (W/V) sodium azide
Concentration:	lot specific
Purification:	Affinity chromatography on Protein A
Conjugation:	Unconjugated
Storage:	Store the antibody undiluted at 2-8°C for one month or (in aliquots) at -20°C for longer. Avoid repeated freezing and thawing.
Stability:	Shelf life: one year from despatch.
Predicted Protein Size:	44301 Da
Gene Name:	NSE4 homolog A, SMC5-SMC6 complex component
Database Link:	Entrez Gene 54780 Human Q9NXX6
Synonyms:	C10orf86



[View online »](#)

Product images:

Western blot analysis of NSE4A Antibody (N-term) in WiDr cell line lysates (35ug/lane). NSE4A (arrow) was detected using the purified Pab.