

## Product datasheet for **AP52938PU-N**

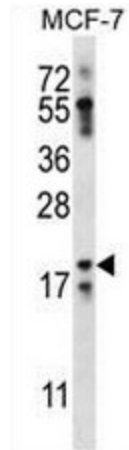
### NRN1L (Center) Rabbit Polyclonal Antibody

#### Product data:

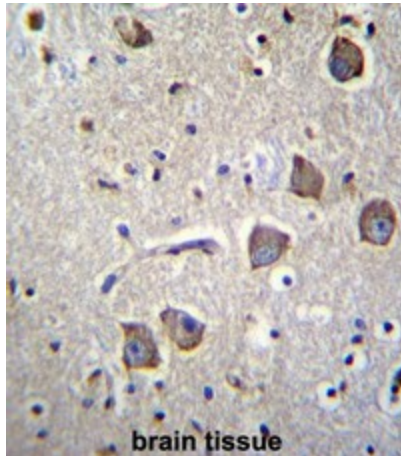
Product Type:	Primary Antibodies
Applications:	IHC, WB
Recommended Dilution:	<b>ELISA:</b> 1/1000. <b>Western Blot:</b> 1/100 - 1/500. <b>Immunohistochemistry on paraffin sections:</b> 1/10 - 1/50.
Reactivity:	Human
Host:	Rabbit
Isotype:	Ig
Clonality:	Polyclonal
Immunogen:	KLH conjugated synthetic peptide between 39-70 amino acids from the Central region of human NRN1L
Specificity:	This antibody reacts to NRN1L.
Formulation:	PBS State: Aff - Purified State: Liquid purified Ig fraction Preservative: 0.09% (W/V) sodium azide
Concentration:	lot specific
Purification:	Affinity chromatography on Protein A
Conjugation:	Unconjugated
Storage:	Store the antibody undiluted at 2-8°C for one month or (in aliquots) at -20°C for longer. Avoid repeated freezing and thawing.
Stability:	Shelf life: one year from despatch.
Predicted Protein Size:	17786 Da
Gene Name:	neuritin 1 like
Database Link:	<a href="#">Entrez Gene 123904 Human Q496H8</a>
Synonyms:	Neuritin-like protein



[View online »](#)

**Product images:**

NRN1L Antibody (Center) western blot analysis in MCF-7 cell line lysates (35ug/lane). This demonstrates the NRN1L antibody detected the NRN1L protein (arrow).



NRN1L Antibody (Center) immunohistochemistry analysis in formalin fixed and paraffin embedded human brain tissue followed by peroxidase conjugation of the secondary antibody and DAB staining. This data demonstrates the use of NRN1L Antibody (Center) for immunohistochemistry. Clinical relevance has not been evaluated.