

Product datasheet for **AP52935PU-N**

GCNF (NR6A1) (N-term) Rabbit Polyclonal Antibody

Product data:

Product Type:	Primary Antibodies
Applications:	WB
Recommended Dilution:	ELISA: 1/1000. Western Blot: 1/100 - 1/500.
Reactivity:	Human, Mouse
Host:	Rabbit
Isotype:	Ig
Clonality:	Polyclonal
Immunogen:	KLH conjugated synthetic peptide between 37-67 amino acids from the N-terminal region of human NR6A1
Specificity:	This antibody reacts to NR6A1.
Formulation:	PBS State: Aff - Purified State: Liquid purified Ig fraction Preservative: 0.09% (W/V) sodium azide
Concentration:	lot specific
Purification:	Affinity chromatography on Protein A
Conjugation:	Unconjugated
Storage:	Store the antibody undiluted at 2-8°C for one month or (in aliquots) at -20°C for longer. Avoid repeated freezing and thawing.
Stability:	Shelf life: one year from despatch.
Predicted Protein Size:	54383 Da
Gene Name:	nuclear receptor subfamily 6 group A member 1
Database Link:	Entrez Gene 14536 Mouse Entrez Gene 2649 Human Q15406



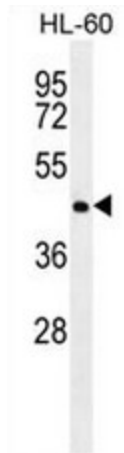
[View online »](#)

Background: This gene encodes an orphan nuclear receptor which is a member of the nuclear hormone receptor family. Its expression pattern suggests that it may be involved in neurogenesis and germ cell development. The protein can homodimerize and bind DNA, but in vivo targets have not been identified. The gene expresses at least alternatively spliced transcript variants.

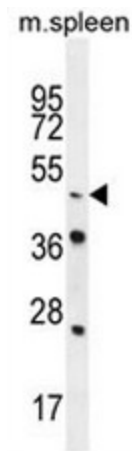
Synonyms: GCNF

Protein Families: Druggable Genome, ES Cell Differentiation/IPS, Transcription Factors

Product images:



NR6A1 Antibody (N-term) western blot analysis in HL-60 cell line lysates (35ug/lane). This demonstrates the NR6A1 antibody detected the NR6A1 protein (arrow).



NR6A1 Antibody (N-term) western blot analysis in mouse spleen tissue lysates (35ug/lane). This demonstrates the NR6A1 antibody detected the NR6A1 protein (arrow).