

Product datasheet for **AP52925PU-N**

NPY2R (N-term) Rabbit Polyclonal Antibody

Product data:

| | |
|-------------------------|---|
| Product Type: | Primary Antibodies |
| Applications: | WB |
| Recommended Dilution: | ELISA: 1/1000. Western Blot: 1/100 - 1/500. |
| Reactivity: | Human, Mouse |
| Host: | Rabbit |
| Isotype: | Ig |
| Clonality: | Polyclonal |
| Immunogen: | KLH conjugated synthetic peptide between 25–54 amino acids from the N-terminal region of human NPY2R |
| Specificity: | This antibody reacts to NPY2R. |
| Formulation: | PBS State: Aff - Purified State: Liquid purified Ig fraction Preservative: 0.09% (W/V) sodium azide |
| Concentration: | lot specific |
| Purification: | Affinity chromatography on Protein A |
| Conjugation: | Unconjugated |
| Storage: | Store the antibody undiluted at 2-8°C for one month or (in aliquots) at -20°C for longer. Avoid repeated freezing and thawing. |
| Stability: | Shelf life: one year from despatch. |
| Predicted Protein Size: | 42731 Da |
| Gene Name: | neuropeptide Y receptor Y2 |
| Database Link: | Entrez Gene 18167 Mouse Entrez Gene 4887 Human P49146 |
| Background: | Receptor for neuropeptide Y and peptide YY. The rank order of affinity of this receptor for pancreatic polypeptides is PYY > NPY > PYY (3-36) > NPY (2-36) > [Ile-31, Gln-34] PP > [Leu-31, Pro-34] NPY > PP, [Pro-34] PYY and NPY free acid. |



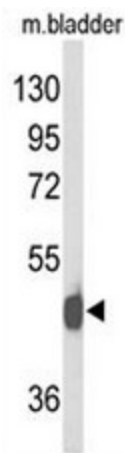
[View online »](#)

Synonyms: NPY2-R, NPY-Y2 receptor, Y2 receptor, Neuropeptide Y receptor 2

Protein Families: Druggable Genome, GPCR, Transmembrane

Protein Pathways: Neuroactive ligand-receptor interaction

Product images:



Western blot analysis of NPY2R Antibody (N-term) in mouse bladder tissue lysates (35ug/lane). DCN (arrow) was detected using the purified Pab.