

Product datasheet for **AP52924PU-N**

NPW (C-term) Rabbit Polyclonal Antibody

Product data:

Product Type:	Primary Antibodies
Applications:	WB
Recommended Dilution:	ELISA: 1/1000. Western Blot: 1/100 - 1/500.
Reactivity:	Human
Host:	Rabbit
Isotype:	Ig
Clonality:	Polyclonal
Immunogen:	KLH conjugated synthetic peptide between 128~158 amino acids from the C-terminal region of human NPW
Specificity:	This antibody reacts to HPW.
Formulation:	PBS State: Aff - Purified State: Liquid purified Ig fraction Preservative: 0.09% (W/V) sodium azide
Concentration:	lot specific
Purification:	Affinity chromatography on Protein A
Conjugation:	Unconjugated
Storage:	Store the antibody undiluted at 2-8°C for one month or (in aliquots) at -20°C for longer. Avoid repeated freezing and thawing.
Stability:	Shelf life: one year from despatch.
Predicted Protein Size:	18048 Da
Gene Name:	neuropeptide W
Database Link:	Entrez Gene 283869 Human Q8N729



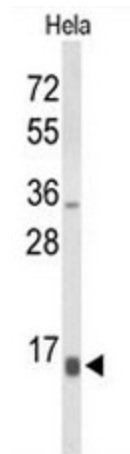
[View online »](#)

Background:

NPW is processed into 23- and 30-amino acid neuropeptides that bind and activate two G-protein coupled receptors in the central nervous system. The neuropeptides have been shown to enhance cortisol secretion from adrenal cells through the adenylate cyclase/protein kinase A signaling cascade. The preproprotein is translated using a non-AUG initiation codon that is inferred from analyses of the mouse ortholog. [provided by RefSeq].

Synonyms:

Neuropeptide W-30, 30, hL8C, Neuropeptide W-23, 23, hL8, Preproprotein L8, hPPL8, Neuropeptide W, PP, PPL8

Product images:

Western blot analysis of NPW Antibody (C-term) in HeLa cell line lysates (35ug/lane). NPW (arrow) was detected using the purified Pab.