

## Product datasheet for **AP52923PU-N**

### **NPTN (N-term) Rabbit Polyclonal Antibody**

#### **Product data:**

Product Type:	Primary Antibodies
Applications:	WB
Recommended Dilution:	<b>ELISA:</b> 1/1000. <b>Western Blot:</b> 1/100 - 1/500.
Reactivity:	Human
Host:	Rabbit
Isotype:	Ig
Clonality:	Polyclonal
Immunogen:	KLH conjugated synthetic peptide between 79-108 amino acids from the N-terminal region of human NPTN
Specificity:	This antibody reacts to NPTN.
Formulation:	PBS State: Aff - Purified State: Liquid purified Ig fraction Preservative: 0.09% (W/V) sodium azide
Concentration:	lot specific
Purification:	Affinity chromatography on Protein A
Conjugation:	Unconjugated
Storage:	Store the antibody undiluted at 2-8°C for one month or (in aliquots) at -20°C for longer. Avoid repeated freezing and thawing.
Stability:	Shelf life: one year from despatch.
Predicted Protein Size:	44387 Da
Gene Name:	neuroplastin
Database Link:	<a href="#">Entrez Gene 27020 Human Q9Y639</a>
Background:	This gene encodes a type I transmembrane protein belonging to the Ig superfamily. The protein is believed to be involved in cell-cell interactions or cell-substrate interactions. Alternative splicing results in multiple transcript variants. [provided by RefSeq].

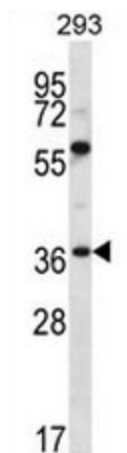


[View online »](#)

**Synonyms:** NPTN, SDR1, SDR-1, Stromal cell-derived receptor 1

**Protein Families:** Druggable Genome, Transmembrane

**Product images:**



NPTN Antibody (N-term) western blot analysis in 293 cell line lysates (35ug/lane). This demonstrates the NPTN antibody detected the NPTN protein (arrow).