

Product datasheet for **AP52922PU-N**

NPSR1 (C-term) Rabbit Polyclonal Antibody

Product data:

Product Type:	Primary Antibodies
Applications:	WB
Recommended Dilution:	ELISA: 1/1,000. Western Blot: 1/1,000.
Reactivity:	Human, Mouse
Host:	Rabbit
Isotype:	Ig
Clonality:	Polyclonal
Immunogen:	KLH conjugated synthetic peptide between 327-356 amino acids from the C-terminal region of human NPSR1
Specificity:	This antibody reacts to NPSR1.
Formulation:	PBS State: Aff - Purified State: Liquid purified Ig fraction Preservative: 0.09% (W/V) sodium azide
Concentration:	lot specific
Purification:	Affinity chromatography on Protein A
Conjugation:	Unconjugated
Storage:	Store undiluted at 2-8°C for one month or (in aliquots) at -20°C for longer. Avoid repeated freezing and thawing.
Stability:	Shelf life: one year from despatch.
Predicted Protein Size:	42687 Da
Gene Name:	neuropeptide S receptor 1
Database Link:	Entrez Gene 319239 Mouse Entrez Gene 387129 Human Q6W5P4
Background:	NPSR1 is a member of the G protein-coupled receptor 1 family and encodes a plasma membrane protein. Increased expression of this gene in ciliated cells of the respiratory epithelium and in bronchial smooth muscle cells is associated with asthma.

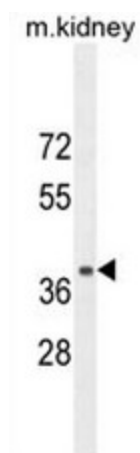


[View online »](#)

Synonyms: Neuropeptide S receptor, G-protein coupled receptor 154, NPSR1, GPRA, PGR14

Protein Families: Druggable Genome, Transmembrane

Product images:



NPSR1 Antibody (C-term) western blot analysis in mouse kidney tissue lysates (35ug/lane). This demonstrates the NPSR1 antibody detected the NPSR1 protein (arrow).