

Product datasheet for **AP52921PU-N**

NIPSNAP3A (Center) Rabbit Polyclonal Antibody

Product data:

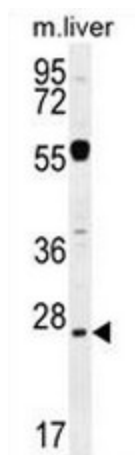
Product Type:	Primary Antibodies
Applications:	IHC, WB
Recommended Dilution:	ELISA: 1/1000. Western Blot: 1/100 - 1/500. Immunohistochemistry on paraffin sections: 1/50 - 1/100.
Reactivity:	Human, Mouse
Host:	Rabbit
Isotype:	Ig
Clonality:	Polyclonal
Immunogen:	KLH conjugated synthetic peptide between 81-109 amino acids from the Central region of human NPS3A
Specificity:	This antibody reacts to NPS3A.
Formulation:	PBS State: Aff - Purified State: Liquid purified Ig fraction Preservative: 0.09% (W/V) sodium azide
Concentration:	lot specific
Purification:	Affinity chromatography on Protein A
Conjugation:	Unconjugated
Storage:	Store the antibody undiluted at 2-8°C for one month or (in aliquots) at -20°C for longer. Avoid repeated freezing and thawing.
Stability:	Shelf life: one year from despatch.
Predicted Protein Size:	28467 Da
Gene Name:	nipsnap homolog 3A
Database Link:	Entrez Gene 73398 Mouse Entrez Gene 25934 Human Q9UFN0
Background:	NIPSNAP3A belongs to a family of proteins with putative roles in vesicular transport (Buechler et al., 2004 [PubMed 15177564]).



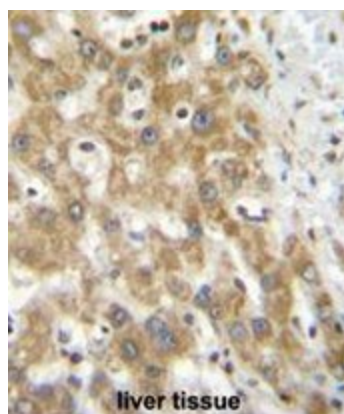
[View online »](#)

Synonyms: DKFZp564D177; FLJ13953; HSPC299; MGC14553; NIPSNAP4; TASSC

Product images:



NPS3A Antibody (Center) western blot analysis in mouse liver tissue lysates (35ug/lane). This demonstrates the NPS3A antibody detected the NPS3A protein (arrow).



NPS3A Antibody (Center) immunohistochemistry analysis in formalin fixed and paraffin embedded human liver tissue followed by peroxidase conjugation of the secondary antibody and DAB staining. This data demonstrates the use of NPS3A Antibody (Center) for immunohistochemistry. Clinical relevance has not been evaluated.