

## Product datasheet for **AP52920PU-N**

### **NPR2L (NPRL2) (C-term) Rabbit Polyclonal Antibody**

#### **Product data:**

Product Type:	Primary Antibodies
Applications:	WB
Recommended Dilution:	<b>ELISA:</b> 1/1000. <b>Western Blot:</b> 1/100 - 1/500.
Reactivity:	Human
Host:	Rabbit
Isotype:	Ig
Clonality:	Polyclonal
Immunogen:	KLH conjugated synthetic peptide between 345-373 amino acids from the C-terminal region of human NPRL2
Specificity:	This antibody reacts to NPRL2.
Formulation:	PBS State: Aff - Purified State: Liquid purified Ig fraction Preservative: 0.09% (W/V) sodium azide
Concentration:	lot specific
Purification:	Affinity chromatography on Protein A
Conjugation:	Unconjugated
Storage:	Store the antibody undiluted at 2-8°C for one month or (in aliquots) at -20°C for longer. Avoid repeated freezing and thawing.
Stability:	Shelf life: one year from despatch.
Predicted Protein Size:	43658 Da
Gene Name:	NPR2-like, GATOR1 complex subunit
Database Link:	<a href="#">Entrez Gene 10641 Human Q8WTW4</a>



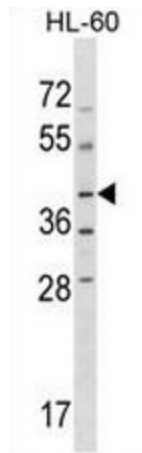
[View online »](#)

**Background:** Suppresses Src-dependent tyrosine phosphorylation and activation of PDPK1 and its downstream signaling. Down-regulates PDPK1 kinase activity by interfering with tyrosine phosphorylation at the Tyr-9 Tyr-373 and Tyr-376 residues. May act as a tumor suppressor. Suppresses cell growth and enhanced sensitivity to various anticancer drugs.

**Synonyms:** NPR2-like

**Protein Families:** Druggable Genome

**Product images:**



NPRL2 Antibody (C-term) western blot analysis in HL-60 cell line lysates (35ug/lane). This demonstrates the NPRL2 antibody detected the NPRL2 protein (arrow).