

## Product datasheet for **AP52916PU-N**

### **NAP1L5 (Center) Rabbit Polyclonal Antibody**

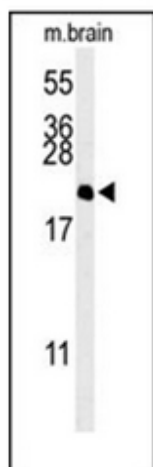
#### **Product data:**

Product Type:	Primary Antibodies
Applications:	WB
Recommended Dilution:	<b>ELISA:</b> 1/1000. <b>Western Blot:</b> 1/100-1/500.
Reactivity:	Human, Mouse
Host:	Rabbit
Isotype:	Ig
Clonality:	Polyclonal
Immunogen:	KLH conjugated synthetic peptide between 89~119 amino acids from the Central region of Human NP1L5
Specificity:	This antibody recognizes Human and Mouse NP1L5
Formulation:	PBS State: Aff - Purified State: Liquid purified Ig fraction Preservative: 0.09% Sodium Azide
Concentration:	lot specific
Purification:	Affinity Chromatography on Protein A
Conjugation:	Unconjugated
Storage:	Store undiluted at 2-8°C for one month or (in aliquots) at -20°C for longer. Avoid repeated freezing and thawing.
Stability:	Shelf life: one year from despatch.
Gene Name:	nucleosome assembly protein 1 like 5
Database Link:	<a href="#">Entrez Gene 58243 Mouse</a> <a href="#">Entrez Gene 266812 Human</a> <a href="#">Q96NT1</a>
Synonyms:	1110020M21Rik; DRLM
Note:	<b>Molecular Weight:</b> 19593 Da



[View online »](#)

## Product images:



Western blot analysis of NP1L5 Antibody (Center) in Mouse brain tissue lysates (35ug/lane). NP1L5 (arrow) was detected using the purified Pab.