

## Product datasheet for **AP52896PU-N**

### NMBR (N-term) Rabbit Polyclonal Antibody

#### Product data:

Product Type:	Primary Antibodies
Applications:	WB
Recommended Dilution:	<b>Western blot:</b> 1/100-1/500. Enzyme immunoassay: 1/1000.
Reactivity:	Human
Host:	Rabbit
Isotype:	Ig
Clonality:	Polyclonal
Immunogen:	Synthetic peptide - KLH conjugated - corresponding to the N-terminal region (between 1-30aa) of human Neuromedin B receptor
Specificity:	This antibody recognizes human Neuromedin B receptor at N-term.
Formulation:	PBS with 0.09% (W/V) Sodium azide State: Aff - Purified State: Liquid purified Ig fraction
Concentration:	lot specific
Purification:	Purified through a Protein A column followed by peptide affinity purification
Conjugation:	Unconjugated
Storage:	Store undiluted at 2-8°C for one month or (in aliquots) at -20°C for longer. Avoid repeated freezing and thawing.
Stability:	Shelf life: one year from despatch.
Gene Name:	neuromedin B receptor
Database Link:	<a href="#">Entrez Gene 4829 Human P28336</a>
Background:	Neuromedin B receptor binds neuromedin B, a potent mitogen and growth factor for normal and neoplastic lung and for gastrointestinal epithelial tissue.
Synonyms:	NMB-R, NMBR
Note:	<b>Molecular Weight:</b> 43435 Da

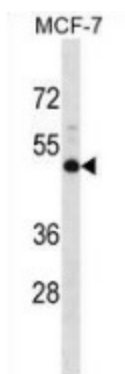


[View online »](#)

Protein Families: Druggable Genome, GPCR, Transmembrane

Protein Pathways: Neuroactive ligand-receptor interaction

### Product images:



Western blot analysis in MCF-7 cell line lysates (35ug/lane) using Neuromedin B receptor antibody. (N-term). This demonstrates this antibody detected the Neuromedin B receptor (arrow).