

Product datasheet for **AP52893PU-N**

nkx6.1 (NKX6-1) (C-term) Rabbit Polyclonal Antibody

Product data:

Product Type:	Primary Antibodies
Applications:	WB
Recommended Dilution:	Western blot: 1/100-1/500. Enzyme immunoassay: 1/1000.
Reactivity:	Human, Mouse
Host:	Rabbit
Isotype:	Ig
Clonality:	Polyclonal
Immunogen:	Synthetic peptide - KLH conjugated - corresponding to the C-terminal region (between 284-314aa) of human NKX6-1
Specificity:	This antibody recognizes NKX6-1 at C-term.
Formulation:	PBS with 0.09% (W/V) Sodium azide State: Aff - Purified State: Liquid purified Ig fraction
Concentration:	lot specific
Purification:	Purified through a Protein A column followed by peptide affinity purification
Conjugation:	Unconjugated
Storage:	Store undiluted at 2-8°C for one month or (in aliquots) at -20°C for longer. Avoid repeated freezing and thawing.
Stability:	Shelf life: one year from despatch.
Gene Name:	NK6 homeobox 1
Database Link:	Entrez Gene 18096 Mouse Entrez Gene 4825 Human P78426
Background:	In the pancreas, NKX6-1 is required for the development of beta cells and is a potent bifunctional transcription regulator that binds to AT-rich sequences within the promoter region of target genes. [Ilye et al., 2004; PubMed 15056733]
Synonyms:	NKX6A



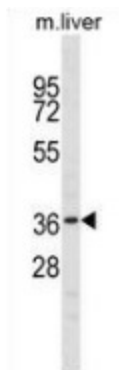
[View online »](#)

Note: **Molecular Weight:** 37849 Da

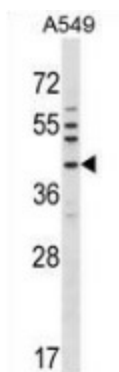
Protein Families: Transcription Factors

Protein Pathways: Maturity onset diabetes of the young

Product images:



Western blot analysis in mouse liver tissue lysates (35ug/lane) using NKX6-1 antibody. (C-term). This demonstrates this antibody detected the NKX6-1 protein (arrow).



Western blot analysis in A549 cell line lysates (35ug/lane) using NKX6-1 antibody. (C-term). This demonstrates this antibody detected the NKX6-1 protein (arrow).