

Product datasheet for **AP52892PU-N**

Nkx2.2 (NKX2-2) (Center) Rabbit Polyclonal Antibody

Product data:

Product Type:	Primary Antibodies
Applications:	WB
Recommended Dilution:	Western blot: 1/100-1/500. Enzyme immunoassay: 1/1000.
Reactivity:	Human
Host:	Rabbit
Isotype:	Ig
Clonality:	Polyclonal
Immunogen:	Synthetic peptide - KLH conjugated - corresponding to the central region (between 98-128aa) of human NKX2-2
Specificity:	This antibody recognizes human NKX2-2.
Formulation:	PBS with 0.09% (W/V) Sodium azide State: Aff - Purified State: Liquid purified Ig fraction
Concentration:	lot specific
Purification:	Purified through a Protein A column followed by peptide affinity purification
Conjugation:	Unconjugated
Storage:	Store undiluted at 2-8°C for one month or (in aliquots) at -20°C for longer. Avoid repeated freezing and thawing.
Stability:	Shelf life: one year from despatch.
Gene Name:	NK2 homeobox 2
Database Link:	Entrez Gene 4821 Human O95096
Background:	The protein encoded by the NKX2-2 gene contains a homeobox domain and may be involved in the morphogenesis of the central nervous system. The NKX2-2 gene is found on chromosome 20 near NKX2-4 and these two genes appear to be duplicated on chromosome 14 in the form of TITF1 and NKX2-8. The encoded protein is likely to be a nuclear transcription factor.



[View online »](#)

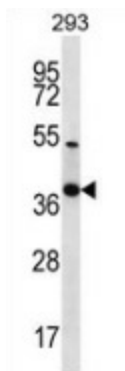
Synonyms: NKX2.2, NKX2B

Note: **Molecular Weight:** 30133 Da

Protein Families: Transcription Factors

Protein Pathways: Maturity onset diabetes of the young

Product images:



Western blot analysis in 293 cell line lysates (35ug/lane) using NKX2-2 antibody. This demonstrates this antibody detected the NKX2-2 protein (arrow).