

Product datasheet for **AP52891PU-N**

TTF1 (NKX2-1) (N-term) Rabbit Polyclonal Antibody

Product data:

| | |
|-----------------------|--|
| Product Type: | Primary Antibodies |
| Applications: | FC, WB |
| Recommended Dilution: | Flow cytometry: 1/10-1/50. Western blot: 1/100-1/500. Enzyme immunoassay: 1/1000. |
| Reactivity: | Human |
| Host: | Rabbit |
| Isotype: | Ig |
| Clonality: | Polyclonal |
| Immunogen: | Synthetic peptide - KLH conjugated - corresponding to the N-terminal region (between 1-30aa) of human NKX2-1 |
| Specificity: | This antibody recognizes human TTF1 / NKX2A at N-term. |
| Formulation: | PBS with 0.09% (W/V) Sodium azide State: Aff - Purified State: Liquid purified Ig fraction |
| Concentration: | lot specific |
| Purification: | Purified through a Protein A column followed by peptide affinity purification |
| Conjugation: | Unconjugated |
| Storage: | Store undiluted at 2-8°C for one month or (in aliquots) at -20°C for longer. Avoid repeated freezing and thawing. |
| Stability: | Shelf life: one year from despatch. |
| Gene Name: | NK2 homeobox 1 |
| Database Link: | Entrez Gene 7080 Human P43699 |



[View online »](#)

Background:

The NKX2-1 gene encodes a protein initially identified as a thyroid-specific transcription factor (TTF). TTF1 binds to thyroglobulin promoter and regulates the expression of thyroid-specific genes but has also been shown to regulate the expression of genes involved in morphogenesis. Mutations and deletions in this gene are associated with benign hereditary chorea, choreoathetosis, congenital hypothyroidism, and neonatal respiratory distress, and may be associated with thyroid cancer. Multiple transcript variants encoding different isoforms have been found for this gene.

Synonyms:

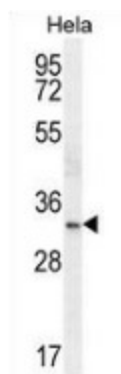
NKX2-1, Nkx-2.1, TTF1, Thyroid nuclear factor 1, Thyroid transcription factor 1, TTF-1

Note:

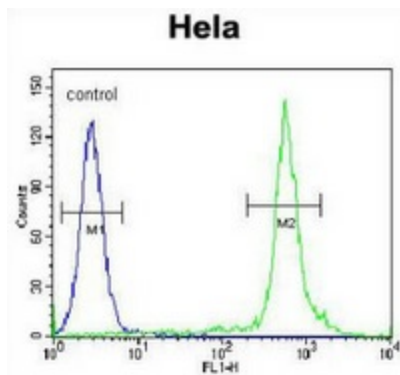
Molecular Weight: 38596 Da

Protein Families:

Druggable Genome, ES Cell Differentiation/IPS, Transcription Factors

Product images:


Western blot analysis in HeLa cell line lysates (35ug/lane) using TTF1 / NKX2A antibody. (N-term). This demonstrates this antibody detected the NKX2-1 protein (arrow).



Flow cytometric analysis of HeLa cells (right histogram) compared to a negative control cell (left histogram) using TTF1 / NKX2A antibody. (N-term), followed by FITC-conjugated secondary antibodies.