

Product datasheet for **AP52890PU-N**

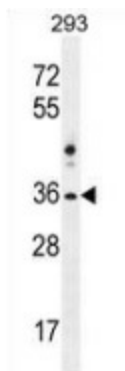
NKX1-2 (N-term) Rabbit Polyclonal Antibody

Product data:

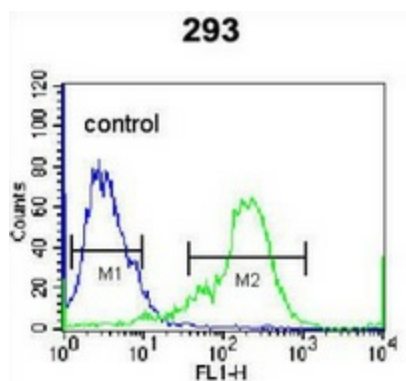
| | |
|-----------------------|--|
| Product Type: | Primary Antibodies |
| Applications: | FC, WB |
| Recommended Dilution: | Flow cytometry: 1/10-1/50. Western blot: 1/100-1/500. Enzyme immunoassay: 1/1000. |
| Reactivity: | Human |
| Host: | Rabbit |
| Isotype: | Ig |
| Clonality: | Polyclonal |
| Immunogen: | Synthetic peptide - KLH conjugated - corresponding to the N-terminal region (between 53-82aa) of human NKX1-2 |
| Specificity: | This antibody recognizes human NKX1-2 at N-term. |
| Formulation: | PBS with 0.09% (W/V) Sodium azide State: Aff - Purified State: Liquid purified Ig fraction |
| Concentration: | lot specific |
| Purification: | Purified through a Protein A column followed by peptide affinity purification |
| Conjugation: | Unconjugated |
| Storage: | Store undiluted at 2-8°C for one month or (in aliquots) at -20°C for longer. Avoid repeated freezing and thawing. |
| Stability: | Shelf life: one year from despatch. |
| Gene Name: | NK1 homeobox 2 |
| Database Link: | Entrez Gene 390010 Human Q9UD57 |
| Background: | NKX1-2 may function in cell specification, particularly in the CNS (By similarity). |
| Synonyms: | Nkx1.1, Sax1, Homeobox protein SAX-1, NKX-1.1 |
| Note: | Molecular Weight: 34708 Da |



[View online »](#)

Product images:


Western blot analysis in 293 cell line lysates (35ug/lane) using NKX1-2 antibody. (N-term). This demonstrates this antibody detected the NKX1-2 protein (arrow).



Flow cytometric analysis of 293 cells (right histogram) compared to a negative control cell (left histogram) using NKX1-2 antibody. (N-term), followed by FITC-conjugated secondary antibodies.