

## Product datasheet for **AP52888PU-N**

### **NKPD1 (C-term) Rabbit Polyclonal Antibody**

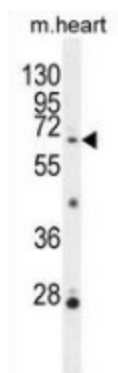
#### **Product data:**

Product Type:	Primary Antibodies
Applications:	FC, WB
Recommended Dilution:	<b>Flow cytometry:</b> 1/10-1/50. <b>Western blot:</b> 1/100-1/500. Enzyme immunoassay: 1/1000.
Reactivity:	Human, Mouse
Host:	Rabbit
Isotype:	Ig
Clonality:	Polyclonal
Immunogen:	Synthetic peptide - KLH conjugated - corresponding to the C-terminal region (between 535-564aa) of human NKPD1
Specificity:	This antibody recognizes human and mouse NKPD1 at C-term.
Formulation:	PBS with 0.09% (W/V) Sodium azide State: Aff - Purified State: Liquid purified Ig fraction
Concentration:	lot specific
Purification:	Purified through a Protein A column followed by peptide affinity purification
Conjugation:	Unconjugated
Storage:	Store undiluted at 2-8°C for one month or (in aliquots) at -20°C for longer. Avoid repeated freezing and thawing.
Stability:	Shelf life: one year from despatch.
Database Link:	<u><a href="#">Q17RQ9</a></u>
Note:	<b>Molecular Weight:</b> 67780 Da

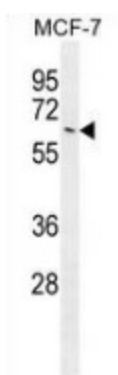


[View online »](#)

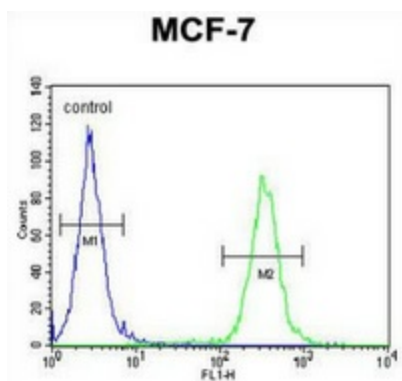
## Product images:



Western blot analysis in mouse heart tissue lysates (35ug/lane) using NKPD1 antibody Cat.-No.AP52888PU-N (C-term). This demonstrates this antibody detected the NKPD1 protein (arrow).



Western blot analysis in MCF-7 cell line lysates (35ug/lane) using NKPD1 antibody Cat.-No.AP52888PU-N (C-term). This demonstrates this antibody detected the NKPD1 protein (arrow).



Flow cytometric analysis of MCF-7 cells (right histogram) compared to a negative control cell (left histogram) using NKPD1 antibody Cat.-No.AP52888PU-N (C-term), followed by FITC-conjugated goat-anti-rabbit secondary antibodies.