

Product datasheet for **AP52886PU-N**

NKD2 (C-term) Rabbit Polyclonal Antibody

Product data:

| | |
|-----------------------|----------------------------------------------------------------------------------------------------------------------------------------------------------------------------------------------------------------|
| Product Type: | Primary Antibodies |
| Applications: | FC, IF, IHC, WB |
| Recommended Dilution: | Flow cytometry: 1/10-1/50. Immunofluorescence: 1/10-1/50. Immunohistochemistry on Paraffin sections: 1/10-1/50. Western blot: 1/100-1/500. Enzyme immunoassay: 1/1000. |
| Reactivity: | Human |
| Host: | Rabbit |
| Isotype: | Ig |
| Clonality: | Polyclonal |
| Immunogen: | Synthetic peptide - KLH conjugated - corresponding to the C-terminal region (between 373-401aa) of human NKD2 |
| Specificity: | This antibody recognizes human NKD2 at C-term. |
| Formulation: | PBS with 0.09% (W/V) Sodium azide State: Aff - Purified State: Liquid purified Ig fraction |
| Concentration: | lot specific |
| Purification: | Purified through a Protein A column followed by peptide affinity purification |
| Conjugation: | Unconjugated |
| Storage: | Store undiluted at 2-8°C for one month or (in aliquots) at -20°C for longer. Avoid repeated freezing and thawing. |
| Stability: | Shelf life: one year from despatch. |
| Gene Name: | naked cuticle homolog 2 |
| Database Link: | Entrez Gene 85409 Human Q969F2 |
| Background: | The NKD2 genes encodes a cell autonomous antagonist of the canonical Wnt signaling pathway. |



[View online »](#)

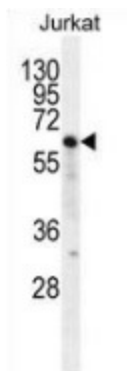
Synonyms: Naked-2, hNkd2

Note: **Molecular Weight:** 50055 Da

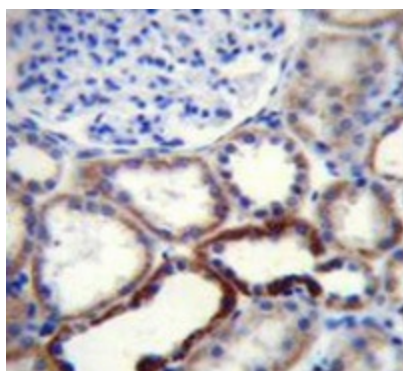
Protein Families: Druggable Genome

Protein Pathways: Wnt signaling pathway

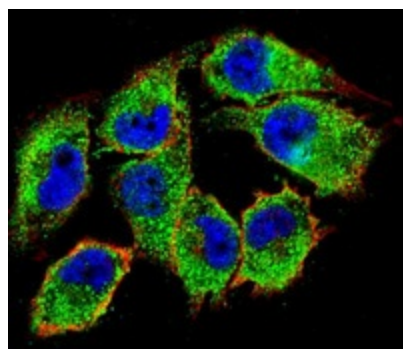
Product images:



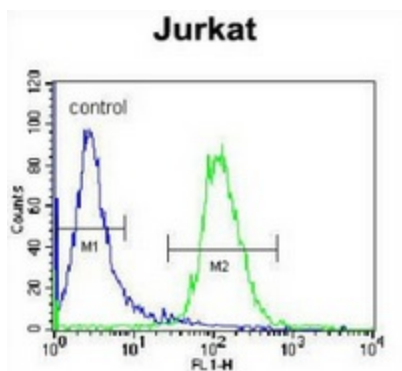
Western blot analysis in Jurkat cell line lysates (35ug/lane) using NKD2 antibody. (C-term). This demonstrates this antibody detected the NKD2 protein (arrow).



Immunohistochemistry analysis in human kidney tissue (Formalin-fixed, Paraffin-embedded) using NKD2 antibody. (C-term), followed by peroxidase conjugated secondary antibody and DAB staining. This data demonstrates this antibody for IHC. Clinical relevance has not been evaluated.



Confocal immunofluorescent analysis of A375 cells using NKD2 antibody. (C-term), followed by Alexa Fluor 488-conjugated goat anti-rabbit IgG (green). Actin filaments have been labeled with Alexa Fluor 555 phalloidin (red). DAPI was used to stain the cell nuclear (blue).



Flow cytometric analysis of Jurkat cells (right histogram) compared to a negative control cell (left histogram) using NKD2 antibody. (C-term), followed by FITC-conjugated donkey-anti-rabbit secondary antibodies.