

Product datasheet for **AP52883PU-N**

NKAIN2 (Center) Rabbit Polyclonal Antibody

Product data:

Product Type:	Primary Antibodies
Applications:	WB
Recommended Dilution:	Western blot: 1/100-1/500. Enzyme immunoassay: 1/1000.
Reactivity:	Human
Host:	Rabbit
Isotype:	Ig
Clonality:	Polyclonal
Immunogen:	Synthetic peptide - KLH conjugated - corresponding to the central region (between 105-133aa) of human NKAIN2
Specificity:	This antibody recognizes human NKAIN2.
Formulation:	PBS with 0.09% (W/V) Sodium azide State: Aff - Purified State: Liquid purified Ig fraction
Concentration:	lot specific
Purification:	Purified through a Protein A column followed by peptide affinity purification
Conjugation:	Unconjugated
Storage:	Store undiluted at 2-8°C for one month or (in aliquots) at -20°C for longer. Avoid repeated freezing and thawing.
Stability:	Shelf life: one year from despatch.
Gene Name:	Na ⁺ /K ⁺ transporting ATPase interacting 2
Database Link:	Entrez Gene 154215 Human Q5VXU1
Background:	The protein encoded by the NKAIN2 gene is a transmembrane protein that interacts with the beta subunit of Na,K-ATPase (ATP1B1). A chromosomal translocation involving this gene is a cause of lymphoma. At least two transcript variants encoding different isoforms have been found for this gene.
Synonyms:	FAM77B, TCBA1

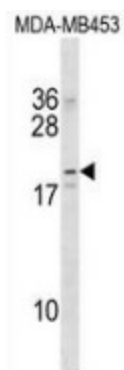


[View online »](#)

Note: **Molecular Weight:** 23831 Da

Protein Families: Transmembrane

Product images:



Western blot analysis in MDA-MB453 cell line lysates (35ug/lane) using NKAIN2 antibody. This demonstrates this antibody detected the NKAIN2 protein (arrow).