

Product datasheet for **AP52882PU-N**

NKAIN1 (C-term) Rabbit Polyclonal Antibody

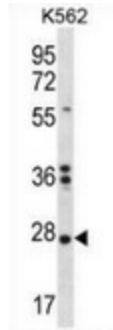
Product data:

Product Type:	Primary Antibodies
Applications:	FC, WB
Recommended Dilution:	Flow cytometry: 1/10-1/50. Western blot: 1/100-1/500. Enzyme immunoassay: 1/1000.
Reactivity:	Human
Host:	Rabbit
Isotype:	Ig
Clonality:	Polyclonal
Immunogen:	Synthetic peptide - KLH conjugated - corresponding to the C-terminal region (between 156-186aa) of human NKAIN1 / FAM77C
Specificity:	This antibody recognizes human NKAIN1 / FAM77C at C-term.
Formulation:	PBS with 0.09% (W/V) Sodium azide State: Aff - Purified State: Liquid purified Ig fraction
Concentration:	lot specific
Purification:	Purified through a Protein A column followed by peptide affinity purification
Conjugation:	Unconjugated
Storage:	Store undiluted at 2-8°C for one month or (in aliquots) at -20°C for longer. Avoid repeated freezing and thawing.
Stability:	Shelf life: one year from despatch.
Gene Name:	Na ⁺ /K ⁺ transporting ATPase interacting 1
Database Link:	Entrez Gene 79570 Human Q4KMZ8
Synonyms:	FAM77C; FLJ12650
Note:	Molecular Weight: 23293 Da
Protein Families:	Transmembrane

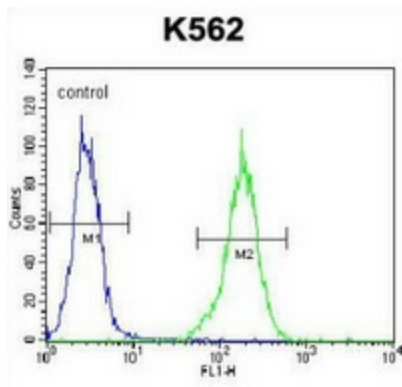


[View online »](#)

Product images:



Western blot analysis in K562 cell line lysates (35ug/lane) using NKAIN1 / FAM77C antibody. (C-term). This demonstrates this antibody detected the NKAIN1 protein (arrow).



Flow cytometric analysis of K562 cells (right histogram) compared to a negative control cell (left histogram) using NKAIN1 / FAM77C antibody. (C-term), followed by FITC-conjugated goat-anti-rabbit secondary antibodies.