

Product datasheet for **AP52880PU-N**

NIT1 (C-term) Rabbit Polyclonal Antibody

Product data:

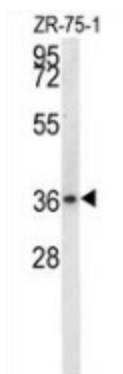
Product Type:	Primary Antibodies
Applications:	WB
Recommended Dilution:	Western blot: 1/100-1/500. Enzyme immunoassay: 1/1000.
Reactivity:	Human
Host:	Rabbit
Isotype:	Ig
Clonality:	Polyclonal
Immunogen:	Synthetic peptide - KLH conjugated - corresponding to the C-terminal region (between 297-327aa) of human NIT1
Specificity:	This antibody recognizes human NIT1 at C-term.
Formulation:	PBS with 0.09% (W/V) Sodium azide State: Aff - Purified State: Liquid purified Ig fraction
Concentration:	lot specific
Purification:	Purified through a Protein A column followed by peptide affinity purification
Conjugation:	Unconjugated
Storage:	Store undiluted at 2-8°C for one month or (in aliquots) at -20°C for longer. Avoid repeated freezing and thawing.
Stability:	Shelf life: one year from despatch.
Gene Name:	nitrilase 1
Database Link:	Entrez Gene 4817 Human Q86X76
Background:	The NIT1 gene encodes a member of the nitrilase protein family with homology to bacterial and plant nitrilases, enzymes that cleave nitriles and organic amides to the corresponding carboxylic acids plus ammonia. Multiple transcript variants encoding different isoforms have been found for this gene.
Synonyms:	MGC57670



[View online »](#)

Note: **Molecular Weight:** 35896 Da

Product images:



Western blot analysis in ZR-75-1 cell line lysates (35ug/lane) using NIT1 antibody. (C-term). This demonstrates this antibody detected the NIT1 protein (arrow).