

Product datasheet for **AP52877PU-N**

NIPAL4 (N-term) Rabbit Polyclonal Antibody

Product data:

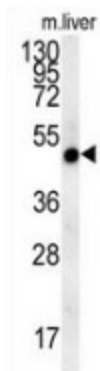
Product Type:	Primary Antibodies
Applications:	IHC, WB
Recommended Dilution:	Immunohistochemistry on Paraffin sections: 1/50-1/100. Western blot: 1/100-1/500. Enzyme immunoassay: 1/1000.
Reactivity:	Human, Mouse
Host:	Rabbit
Isotype:	Ig
Clonality:	Polyclonal
Immunogen:	Synthetic peptide - KLH conjugated - corresponding to the N-terminal region (between 16-45aa) of human NIPA4
Specificity:	This antibody recognizes NIPA4 at N-term.
Formulation:	PBS with 0.09% (W/V) Sodium azide State: Aff - Purified State: Liquid purified Ig fraction
Concentration:	lot specific
Purification:	Purified through a Protein A column followed by peptide affinity purification
Conjugation:	Unconjugated
Storage:	Store undiluted at 2-8°C for one month or (in aliquots) at -20°C for longer. Avoid repeated freezing and thawing.
Stability:	Shelf life: one year from despatch.
Gene Name:	NIPA like domain containing 4
Database Link:	Entrez Gene 348938 Human Q0D2K0
Synonyms:	NIPA4, Ichthyin, NIPA-like protein 4, Non-imprinted in Prader-Willi/Angelman syndrome region protein 4, Magnesium transporter NIPA4
Note:	Molecular Weight: 50058 Da



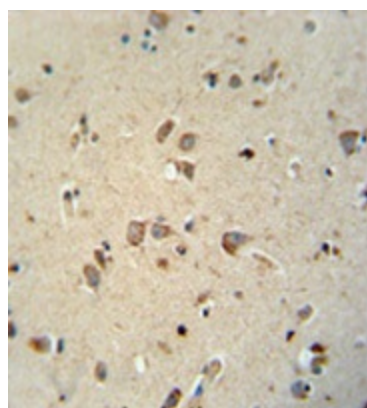
[View online »](#)

Protein Families: Transmembrane

Product images:



Western blot analysis in mouse liver tissue lysates (15ug/lane) using NIPA4 antibody. (N-term). This demonstrates this antibody detected NIPA4 protein (arrow).



Immunohistochemistry analysis in human brain tissue (Formalin-fixed, Paraffin-embedded) using NIPA4 antibody. (N-term), followed by peroxidase conjugated secondary antibody and DAB staining. This data demonstrates the use of this antibody for IHC. Clinical relevance has not been evaluated.