

## Product datasheet for **AP52865PU-N**

### **NFKBIL1 (Center) Rabbit Polyclonal Antibody**

#### **Product data:**

Product Type:	Primary Antibodies
Applications:	FC, IF, WB
Recommended Dilution:	<b>Flow cytometry:</b> 1/10-1/50. <b>Immunofluorescence:</b> 1/10-1/50. <b>Western blot:</b> 1/100-1/500. Enzyme immunoassay: 1/1000.
Reactivity:	Human
Host:	Rabbit
Isotype:	Ig
Clonality:	Polyclonal
Immunogen:	Synthetic peptide - KLH conjugated - corresponding to the central region (between 256-289aa) of human NFKBIL1
Specificity:	This antibody recognizes human NFKBIL1.
Formulation:	PBS with 0.09% (W/V) Sodium azide State: Aff - Purified State: Liquid purified Ig fraction
Concentration:	lot specific
Purification:	Purified through a Protein A column followed by peptide affinity purification
Conjugation:	Unconjugated
Storage:	Store undiluted at 2-8°C for one month or (in aliquots) at -20°C for longer. Avoid repeated freezing and thawing.
Stability:	Shelf life: one year from despatch.
Gene Name:	NFKB inhibitor like 1
Database Link:	<a href="#">Entrez Gene 4795 Human Q9UBC1</a>



[View online »](#)

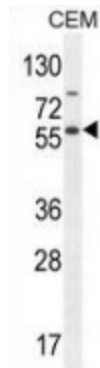
**Background:** The NFKBIL1 gene encodes a divergent member of the I-kappa-B family of proteins. Its function has not been determined. The gene lies within the major histocompatibility complex (MHC) class I region on chromosome 6. Multiple transcript variants encoding different isoforms have been found for this gene.

**Synonyms:** IKBL, IkappaBL

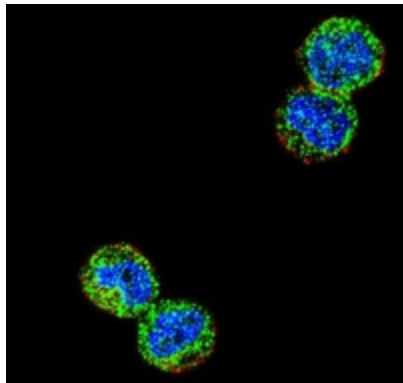
**Note:** **Molecular Weight:** 43204 Da

**Protein Families:** Transcription Factors

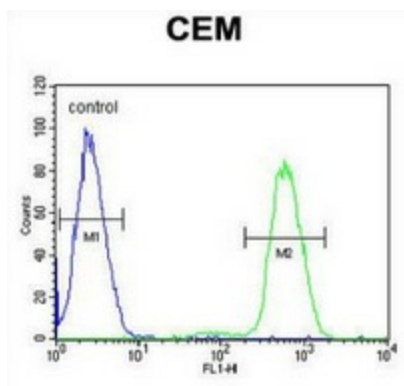
### Product images:



Western blot analysis in CEM cell line lysates (35ug/lane) using NFKBIL1 antibody. This demonstrates this antibody detected the NFKBIL1 protein (arrow).



Confocal immunofluorescent analysis of MDA-MB435 cells using NFKBIL1 antibody, followed by Alexa Fluor 488-conjugated goat anti-rabbit IgG (green). Actin filaments have been labeled with Alexa Fluor 555 phalloidin (red). DAPI was used to stain the cell nuclear (blue).



Flow cytometric analysis of CEM cells (right histogram) compared to a negative control cell (left histogram) using NFKBIL1 antibody, followed by FITC-conjugated goat-anti-rabbit secondary antibodies.