

Product datasheet for **AP52860PU-N**

Nuclear Factor Erythroid 2 Related Factor 1 (NFE2L1) (C-term) Rabbit Polyclonal Antibody

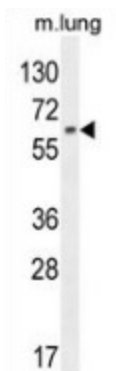
Product data:

| | |
|-----------------------|--|
| Product Type: | Primary Antibodies |
| Applications: | WB |
| Recommended Dilution: | Western blot: 1/100-1/500. Enzyme immunoassay: 1/1000. |
| Reactivity: | Human, Mouse |
| Host: | Rabbit |
| Isotype: | Ig |
| Clonality: | Polyclonal |
| Immunogen: | Synthetic peptide - KLH conjugated - corresponding to the C-terminal region (between 712-742aa) of human NFE2L1 |
| Specificity: | This antibody recognizes NFE2L1 at C-term. |
| Formulation: | PBS with 0.09% (W/V) Sodium azide State: Aff - Purified State: Liquid purified Ig fraction |
| Concentration: | lot specific |
| Purification: | Purified through a Protein A column followed by peptide affinity purification |
| Conjugation: | Unconjugated |
| Storage: | Store undiluted at 2-8°C for one month or (in aliquots) at -20°C for longer. Avoid repeated freezing and thawing. |
| Stability: | Shelf life: one year from despatch. |
| Gene Name: | nuclear factor, erythroid 2 like 1 |
| Database Link: | Entrez Gene 18023 Mouse Entrez Gene 4779 Human Q14494 |
| Synonyms: | NF-E2-related factor 1, NFE2-related factor 1, HBZ17, NRF1, TCF11 |
| Note: | Molecular Weight: 84704 Da |
| Protein Families: | Transcription Factors |



[View online »](#)

Product images:



Western blot analysis in mouse lung tissue lysates (35ug/lane) using NFE2L1 antibody. (C-term). This demonstrates this antibody detected the NFE2L1 protein (arrow).