

Product datasheet for **AP52858PU-N**

Neutrophil Elastase (ELANE) (N-term) Rabbit Polyclonal Antibody

Product data:

Product Type:	Primary Antibodies
Applications:	WB
Recommended Dilution:	Western blot: 1/1000. Enzyme immunoassay: 1/1000.
Reactivity:	Human
Host:	Rabbit
Isotype:	Ig
Clonality:	Polyclonal
Immunogen:	Synthetic peptide - KLH conjugated - between 13-39 amino acids from the N-terminal region (between 20-47aa) of human Neutrophil elastase
Specificity:	This antibody recognizes human Neutrophil elastase at N-term.
Formulation:	PBS with 0.09% (W/V) Sodium azide State: Aff - Purified State: Liquid purified Ig fraction
Concentration:	lot specific
Purification:	Purified through a Protein A column followed by peptide affinity purification
Conjugation:	Unconjugated
Storage:	Store undiluted at 2-8°C for one month or (in aliquots) at -20°C for longer. Avoid repeated freezing and thawing.
Stability:	Shelf life: one year from despatch.
Gene Name:	elastase, neutrophil expressed
Database Link:	Entrez Gene 1991 Human P08246



[View online »](#)

Background:

Elastases form a subfamily of serine proteases that hydrolyze many proteins in addition to elastin. Humans have six elastase genes which encode the structurally similar proteins. The product of this gene hydrolyzes proteins within specialized neutrophil lysosomes, called azurophil granules, as well as proteins of the extracellular matrix following the protein's release from activated neutrophils. The enzyme may play a role in degenerative and inflammatory diseases by its proteolysis of collagen-IV and elastin of the extracellular matrix. This protein degrades the outer membrane protein A (OmpA) of *E. coli* as well as the virulence factors of such bacteria as *Shigella*, *Salmonella* and *Yersinia*. Mutations in this gene are associated with cyclic neutropenia and severe congenital neutropenia (SCN). This gene is clustered with other serine protease gene family members, azurocidin 1 and proteinase 3 genes, at chromosome 19pter. All 3 genes are expressed coordinately and their protein products are packaged together into azurophil granules during neutrophil differentiation.

Synonyms:

ELANE, ELA2, Neutrophil elastase, Elastase-2, PMN elastase, Bone marrow serine protease, Medullasin, Human leukocyte elastase, HLE

Note:

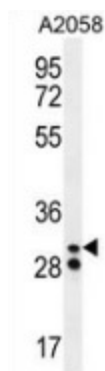
Molecular Weight: 28518 Da

Protein Families:

Protease, Transmembrane

Protein Pathways:

Systemic lupus erythematosus

Product images:


Western blot analysis in A2058 cell line lysates (35ug/lane) using Neutrophil elastase antibody. (N-term). This demonstrates this antibody detected the Neutrophil elastase protein (arrow).