

Product datasheet for **AP52854PU-N**

Oxytocin neurophysin 1 (OXT) (Center) Rabbit Polyclonal Antibody

Product data:

Product Type:	Primary Antibodies
Applications:	FC, IHC, WB
Recommended Dilution:	ELISA: >1/1000 (Peptide Elisa only) Western Blot: 1/1,000. Flow Cytometry: 1/10-1/50. Immunohistochemistry on Paraffin Sections: 1/50-1/100.
Reactivity:	Human
Host:	Rabbit
Isotype:	Ig
Clonality:	Polyclonal
Immunogen:	KLH conjugated synthetic peptide between 11~40 amino acids from the Central region of Human Oxytocin
Specificity:	This antibody recognizes Human Oxytocin (Center). Other species not tested.
Formulation:	PBS containing 0.09% (W/V) Sodium Azide as preservative State: Purified State: Liquid purified Ig fraction
Concentration:	lot specific
Purification:	Saturated Ammonium Sulfate (SAS) precipitation followed by dialysis against PBS
Conjugation:	Unconjugated
Storage:	Store undiluted at 2-8°C for one month or (in aliquots) at -20°C for longer. Avoid repeated freezing and thawing.
Stability:	Shelf life: one year from despatch.
Gene Name:	oxytocin/neurophysin I prepropeptide
Database Link:	Entrez Gene 5020 Human P01178



[View online »](#)

Background:

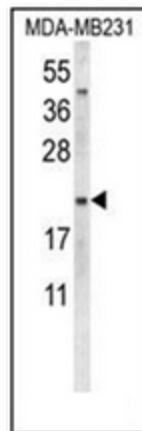
There are two proteins encoded by this gene, oxytocin and neurophysin I. Oxytocin is posterior pituitary hormone which is synthesized as an inactive precursor in the hypothalamus along with its carrier protein neurophysin I. Together with neurophysin, it is packaged into neurosecretory vesicles and transported axonally to the nerve endings in the neurohypophysis, where it is either stored or secreted into the bloodstream. The precursor seems to be activated while it is being transported along the axon to the posterior pituitary. This hormone contracts smooth muscle during parturition and lactation. It is also involved in cognition, tolerance, adaptation and complex sexual and maternal behaviour, as well as in the regulation of water excretion and cardiovascular functions.

Synonyms:

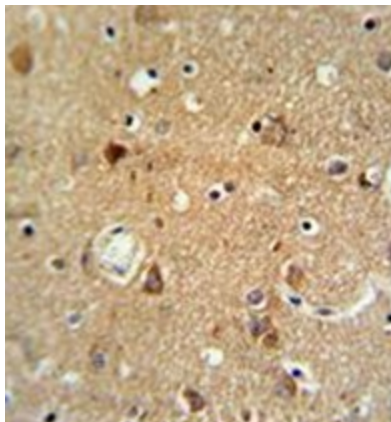
OXT, Ocytocin

Note:**Molecular Weight:** 12722 Da**Protein Families:**

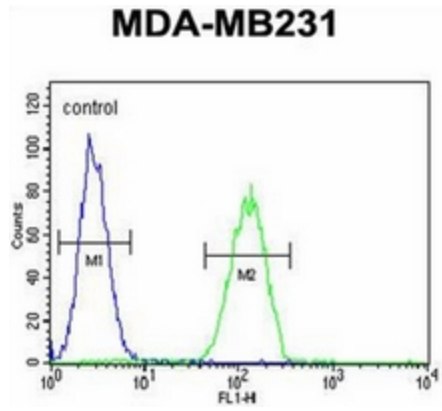
Secreted Protein

Product images:

Western blot analysis of Oxytocin Antibody (Center) in MDA-MB231 cell line lysates (35ug/lane).



Immunohistochemistry analysis in formalin fixed and paraffin embedded brain tissue reacted with Oxytocin Antibody (Center), which was peroxidase conjugated to the secondary antibody and followed by DAB staining.



Flow cytometric analysis of MDA-MB231 cells using Oxytocin Antibody (Center) (right histogram) compared to a negative control cell (left histogram). FITC-conjugated goat-anti-rabbit secondary antibodies were used for the analysis.