

Product datasheet for **AP52850PU-N**

NEIL2 (N-term) Rabbit Polyclonal Antibody

Product data:

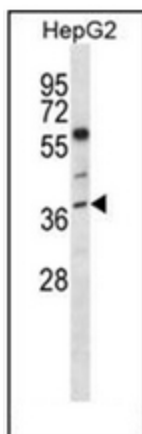
Product Type:	Primary Antibodies
Applications:	IHC, WB
Recommended Dilution:	ELISA: 1/1000. Western Blot: 1/100-1/500.
Reactivity:	Human
Host:	Rabbit
Isotype:	Ig
Clonality:	Polyclonal
Immunogen:	KLH conjugated synthetic peptide between 66-96 amino acids from the N-terminal region of human NEIL2
Specificity:	This antibody recognizes Human NEIL2 (N-term).
Formulation:	PBS containing 0.09% (W/V) Sodium Azide as preservative State: Aff - Purified State: Liquid purified Ig fraction
Concentration:	lot specific
Purification:	Protein A column, followed by peptide affinity purification
Conjugation:	Unconjugated
Storage:	Store undiluted at 2-8°C for one month or (in aliquots) at -20°C for longer. Avoid repeated freezing and thawing.
Stability:	Shelf life: one year from despatch.
Gene Name:	nei like DNA glycosylase 2
Database Link:	Entrez Gene 252969 Human Q969S2
Background:	NEIL2 belongs to a class of DNA glycosylases homologous to the bacterial Fpg/Nei family. These glycosylases initiate the first step in base excision repair by cleaving bases damaged by reactive oxygen species and introducing a DNA strand break via the associated lyase reaction (Bandaru et al., 2002 [PubMed 12509226]).
Synonyms:	Nei-like 2, NEH2



[View online »](#)

Note: **Molecular Weight:** 36826 Da

Product images:



Western blot analysis of NEIL2 Antibody (N-term) in HepG2 cell line lysates (35ug/lane). This demonstrates the NEIL2 antibody detected the NEIL2 protein (arrow).