

Product datasheet for **AP52848PU-N**

NEDD4 2 (NEDD4L) (Center) Rabbit Polyclonal Antibody

Product data:

Product Type:	Primary Antibodies
Applications:	WB
Recommended Dilution:	ELISA: 1/1000. Western Blot: 1/1000.
Reactivity:	Human, Mouse
Host:	Rabbit
Isotype:	Ig
Clonality:	Polyclonal
Immunogen:	KLH conjugated synthetic peptide between 575-604 amino acids from the Central region of human NEDD4L
Specificity:	This antibody recognizes Human and Mouse NEDD4L (Center).
Formulation:	PBS containing 0.09% (W/V) Sodium Azide as preservative State: Aff - Purified State: Liquid purified Ig fraction
Concentration:	lot specific
Purification:	Protein A column, followed by peptide affinity purification
Conjugation:	Unconjugated
Storage:	Store undiluted at 2-8°C for one month or (in aliquots) at -20°C for longer. Avoid repeated freezing and thawing.
Stability:	Shelf life: one year from despatch.
Gene Name:	neural precursor cell expressed, developmentally down-regulated 4-like, E3 ubiquitin protein ligase
Database Link:	Entrez Gene 23327 Human Q96PU5



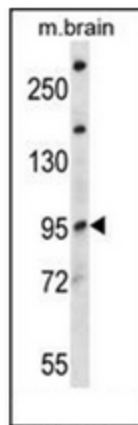
[View online »](#)

Background: E3 ubiquitin-protein ligase which accepts ubiquitin from an E2 ubiquitin-conjugating enzyme in the form of a thioester and then directly transfers the ubiquitin to targeted substrates. Inhibits TGF-beta signaling by triggering SMAD2 and TGFR1 ubiquitination and proteasome-dependent degradation. Promotes ubiquitination and internalization of various plasma membrane channels such as ENaC, Nav1.2, Nav1.3, Nav1.5, Nav1.7, Nav1.8, Kv1.3, EAAT1 or CLC5. Promotes ubiquitination and degradation of SGK.

Synonyms: Nedd4-2, NEDD4.2, KIAA0439, NEDL3

Note: **Molecular Weight:** 111932 Da

Product images:



Western blot analysis of NEDD4L Antibody (Center) in mouse brain tissue lysates (35ug/lane). This demonstrates the NEDD4L antibody detected the NEDD4L protein (arrow).