

## Product datasheet for **AP52838PU-N**

### NDUFAF1 (C-term) Rabbit Polyclonal Antibody

#### Product data:

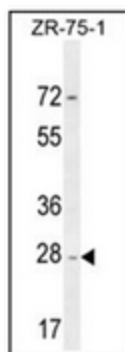
Product Type:	Primary Antibodies
Applications:	IHC, WB
Recommended Dilution:	<b>ELISA:</b> 1/1000. <b>Western Blot:</b> 1/100-1/500. <b>Immunohistochemistry on Paraffin Sections:</b> 1/50-1/100.
Reactivity:	Human
Host:	Rabbit
Isotype:	Ig
Clonality:	Polyclonal
Immunogen:	conjugated synthetic peptide between 250-280 amino acids from the C-terminal region of human NDUFAF1
Specificity:	This antibody recognizes Human NDUFAF1 (C-term).
Formulation:	PBS containing 0.09% (W/V) Sodium Azide as preservative State: Aff - Purified State: Liquid purified Ig fraction
Concentration:	lot specific
Purification:	Protein A column, followed by peptide affinity purification
Conjugation:	Unconjugated
Storage:	Store undiluted at 2-8°C for one month or (in aliquots) at -20°C for longer. Avoid repeated freezing and thawing.
Stability:	Shelf life: one year from despatch.
Gene Name:	NADH:ubiquinone oxidoreductase complex assembly factor 1
Database Link:	<a href="#">Entrez Gene 51103 Human Q9Y375</a>
Background:	The NDUFAF1 gene encodes the human homolog of a Neurospora crassa Cia30 protein involved in the assembly of complex.
Synonyms:	CIA30, CGI-65, mitochondrial NDUFAF1



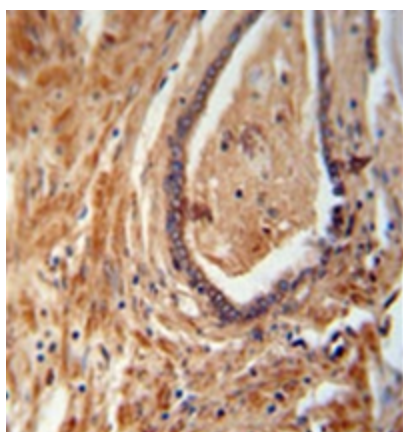
[View online »](#)

Note: **Molecular Weight:** 37764 Da

### Product images:



Western blot analysis of NDUFAF1 Antibody (C-term) in ZR-75-1 cell line lysates (35ug/lane). This demonstrates the NDUFAF1 antibody detected the NDUFAF1 protein (arrow).



Immunohistochemistry analysis in formalin fixed and paraffin embedded human prostate carcinoma reacted with NDUFAF1 Antibody (C-term), which was peroxidase conjugated to the secondary antibody and followed by DAB staining. This data demonstrates the use of the NDUFAF1 antibody (C-term) for immunohistochemistry. Clinical relevance has not been evaluated.