

## Product datasheet for **AP52834PU-N**

### **NDRG2 (N-term) Rabbit Polyclonal Antibody**

#### **Product data:**

Product Type:	Primary Antibodies
Applications:	WB
Recommended Dilution:	<b>ELISA:</b> 1/1000. <b>Western Blot:</b> 1/100-1/500.
Reactivity:	Human
Host:	Rabbit
Isotype:	Ig
Clonality:	Polyclonal
Immunogen:	KLH conjugated synthetic peptide between 41-70 amino acids from the N-terminal region of human NDRG2
Specificity:	This antibody recognizes Human NDRG2 (N-term).
Formulation:	PBS containing 0.09% (W/V) Sodium Azide as preservative State: Aff - Purified State: Liquid purified Ig fraction
Concentration:	lot specific
Purification:	Protein A column, followed by peptide affinity purification
Conjugation:	Unconjugated
Storage:	Store undiluted at 2-8°C for one month or (in aliquots) at -20°C for longer. Avoid repeated freezing and thawing.
Stability:	Shelf life: one year from despatch.
Gene Name:	NDRG family member 2
Database Link:	<a href="#">Entrez Gene 57447 Human Q9UN36</a>
Background:	This gene is a member of the N-myc downregulated gene family which belongs to the alpha/beta hydrolase superfamily. The protein encoded by this gene is a cytoplasmic protein that may play a role in neurite outgrowth. This gene may be involved in glioblastoma carcinogenesis. Several alternatively spliced transcript variants of this gene have been described, but the full-length nature of some of these variants has not been determined.

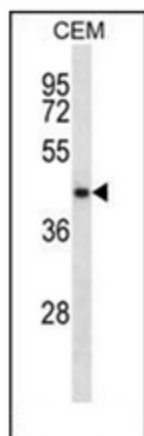


[View online »](#)

Synonyms: KIAA1248, SYLD

Note: **Molecular Weight:** 40798 Da

**Product images:**



Western blot analysis of NDRG2 Antibody (N-term) in CEM cell line lysates (35ug/lane). This demonstrates the NDRG2 antibody detected the NDRG2 protein (arrow).