

Product datasheet for **AP52832PU-N**

Nectin (NDN) (N-term) Rabbit Polyclonal Antibody

Product data:

Product Type:	Primary Antibodies
Applications:	FC, WB
Recommended Dilution:	ELISA: 1/1000. Western Blot: 1/100-1/500. Flow Cytometry: 1/10-1/50.
Reactivity:	Human
Host:	Rabbit
Isotype:	Ig
Clonality:	Polyclonal
Immunogen:	KLH conjugated synthetic peptide between 42-71 amino acids from the N-terminal region of Human Nectin
Specificity:	This antibody recognizes Human Nectin (N-term).
Formulation:	PBS containing 0.09% (W/V) Sodium Azide as preservative State: Aff - Purified State: Liquid purified Ig fraction
Concentration:	lot specific
Purification:	Protein A column, followed by peptide affinity purification
Conjugation:	Unconjugated
Storage:	Store undiluted at 2-8°C for one month or (in aliquots) at -20°C for longer. Avoid repeated freezing and thawing.
Stability:	Shelf life: one year from despatch.
Gene Name:	nectin, MAGE family member
Database Link:	Entrez Gene 4692 Human Q99608
Background:	This intronless gene is located in the Prader-Willi syndrome deletion region. It is an imprinted gene and is expressed exclusively from the paternal allele. Studies in mouse suggest that the protein encoded by this gene may suppress growth in postmitotic neurons.
Synonyms:	NDN

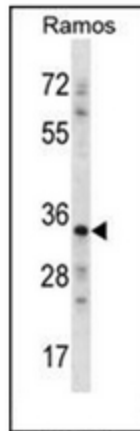


[View online »](#)

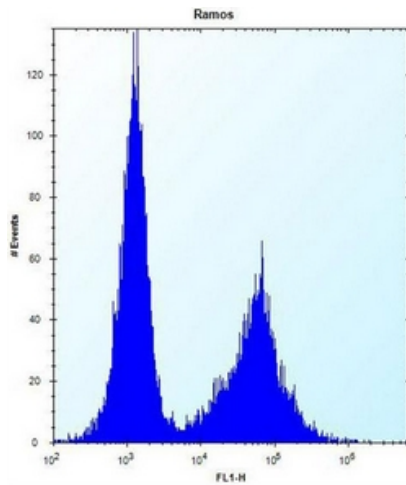
Note: **Molecular Weight:** 36086 Da

Protein Families: Druggable Genome, Transcription Factors

Product images:



Western blot analysis of Necdin Antibody (N-term) in Ramos cell line lysates (35ug/lane). This demonstrates the NDN antibody detected the NDN protein (arrow).



Flow cytometric analysis of Ramos cells using Necdin Antibody (N-term) (right histogram) compared to a negative control cell (left histogram). FITC-conjugated donkey-anti-rabbit secondary antibodies were used for the analysis.