

## Product datasheet for **AP52831PU-N**

### MT ND3 (ND3) (N-term) Rabbit Polyclonal Antibody

#### Product data:

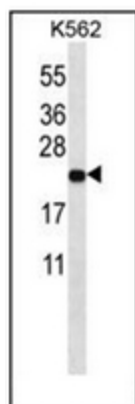
Product Type:	Primary Antibodies
Applications:	FC, WB
Recommended Dilution:	<b>ELISA:</b> 1/1000. <b>Western Blot:</b> 1/100-1/500. <b>Flow Cytometry:</b> 1/10-1/50.
Reactivity:	Human
Host:	Rabbit
Isotype:	Ig
Clonality:	Polyclonal
Immunogen:	KLH conjugated synthetic peptide between 9-39 amino acids from the N-terminal region of human ND3
Specificity:	This antibody recognizes Human ND3 (N-term).
Formulation:	PBS containing 0.09% (W/V) Sodium Azide as preservative State: Aff - Purified State: Liquid purified Ig fraction
Concentration:	lot specific
Purification:	Protein A column, followed by peptide affinity purification
Conjugation:	Unconjugated
Storage:	Store undiluted at 2-8°C for one month or (in aliquots) at -20°C for longer. Avoid repeated freezing and thawing.
Stability:	Shelf life: one year from despatch.
Gene Name:	mitochondrially encoded NADH dehydrogenase 3
Database Link:	<a href="#">P03897</a>
Background:	Core subunit of the mitochondrial membrane respiratory chain NADH dehydrogenase (Complex I) that is believed to belong to the minimal assembly required for catalysis. Complex I functions in the transfer of electrons from NADH to the respiratory chain. The immediate electron acceptor for the enzyme is believed to be ubiquinone (By similarity).
Synonyms:	MT-,NADH-ubiquinone oxidoreductase chain 3,MT, NADH3



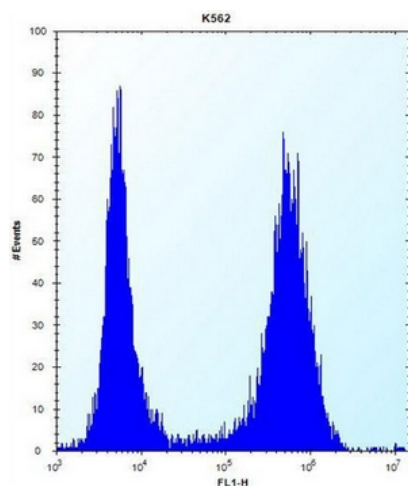
[View online »](#)

Note: **Molecular Weight:** 13186 Da

### Product images:



Western blot analysis of ND3 Antibody (N-term) in K562 cell line lysates (35ug/lane). This demonstrates the ND3 antibody detected the ND3 protein (arrow).



Flow cytometric analysis of K562 cells using ND3 Antibody (N-term) (right histogram) compared to a negative control cell (left histogram). FITC-conjugated donkey-anti-rabbit secondary antibodies were used for the analysis.