

Product datasheet for **AP52824PU-N**

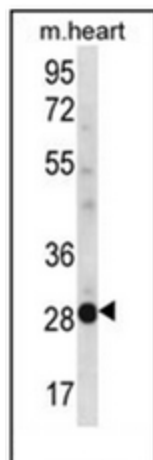
NCCRP1 (C-term) Rabbit Polyclonal Antibody

Product data:

Product Type:	Primary Antibodies
Applications:	WB
Recommended Dilution:	Peptide ELISA: 1/1000. Western Blot: 1/1000.
Reactivity:	Human, Mouse
Host:	Rabbit
Isotype:	Ig
Clonality:	Polyclonal
Immunogen:	KLH conjugated synthetic peptide between 246-275 amino acids from the C-terminal region of human NCCRP1
Specificity:	This antibody recognizes Human and Mouse NCCRP1 (C-term).
Formulation:	PBS containing 0.09% (W/V) Sodium Azide as preservative State: Aff - Purified State: Liquid purified Ig fraction
Concentration:	lot specific
Purification:	Protein A column, followed by peptide affinity purification
Conjugation:	Unconjugated
Storage:	Store undiluted at 2-8°C for one month or (in aliquots) at -20°C for longer. Avoid repeated freezing and thawing.
Stability:	Shelf life: one year from despatch.
Gene Name:	non-specific cytotoxic cell receptor protein 1 homolog (zebrafish)
Database Link:	Entrez Gene 342897 Human Q6ZVX7
Synonyms:	LOC342897
Note:	Molecular Weight: 30847 Da
Protein Families:	Druggable Genome



[View online »](#)

Product images:

Western blot analysis of NCCRP1 Antibody (C-term) in mouse heart tissue lysates (35ug/lane). This demonstrates the NCCRP1 antibody detected the NCCRP1 protein (arrow).