

Product datasheet for **AP52823PU-N**

hCAP D3 (NCAPD3) (C-term) Rabbit Polyclonal Antibody

Product data:

Product Type:	Primary Antibodies
Applications:	WB
Recommended Dilution:	ELISA: 1/1000. Western Blot: 1/100-1/500.
Reactivity:	Human
Host:	Rabbit
Isotype:	Ig
Clonality:	Polyclonal
Immunogen:	KLH conjugated synthetic peptide between 1049-1078 amino acids from the C-terminal region of Human CAPD3
Specificity:	This antibody recognizes Human CAPD3 (C-term).
Formulation:	PBS containing 0.09% (W/V) Sodium Azide as preservative State: Aff - Purified State: Liquid purified Ig fraction
Concentration:	lot specific
Purification:	Protein A column, followed by peptide affinity purification
Conjugation:	Unconjugated
Storage:	Store undiluted at 2-8°C for one month or (in aliquots) at -20°C for longer. Avoid repeated freezing and thawing.
Stability:	Shelf life: one year from despatch.
Gene Name:	non-SMC condensin II complex subunit D3
Database Link:	Entrez Gene 23310 Human P42695
Background:	Condensin complexes I and II play essential roles in mitotic chromosome assembly and segregation. Both condensins contain 2 invariant structural maintenance of chromosome (SMC) subunits, SMC2 (MIM 605576) and SMC4 (MIM 605575), but they contain different sets of non-SMC subunits. NCAPD3 is 1 of 3 non-SMC subunits that define condensin II (Ono et al., 2003 [PubMed 14532007]).

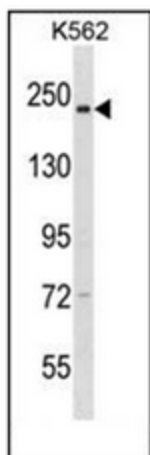


[View online »](#)

Synonyms: NCAPD3, KIAA0056, hCAP-D3

Note: **Molecular Weight:** 168891 Da

Product images:



Western blot analysis of CAPD3 Antibody (C-term) in K562 cell line lysates (35ug/lane).