

## Product datasheet for **AP52819PU-N**

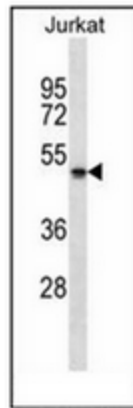
### **NBPF5 (NBPF5P) (C-term) Rabbit Polyclonal Antibody**

#### **Product data:**

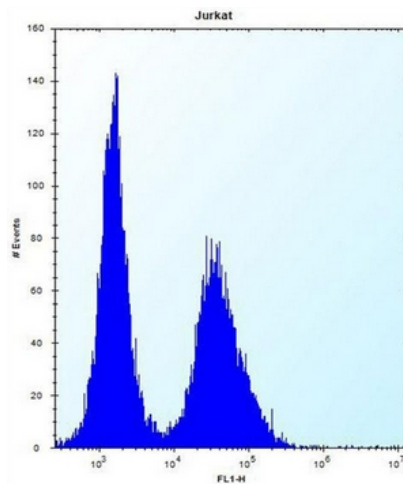
Product Type:	Primary Antibodies
Applications:	FC, WB
Recommended Dilution:	<b>ELISA:</b> 1/1000. <b>Western Blot:</b> 1/100-1/500. <b>Flow Cytometry:</b> 1/10-1/50.
Reactivity:	Human
Host:	Rabbit
Isotype:	Ig
Clonality:	Polyclonal
Immunogen:	KLH conjugated synthetic peptide between 270-299 amino acids from the C-terminal region of human NBPF5
Specificity:	This antibody recognizes Human NBPF5 (C-term).
Formulation:	PBS containing 0.09% (W/V) Sodium Azide as preservative State: Aff - Purified State: Liquid purified Ig fraction
Concentration:	lot specific
Purification:	Protein A column, followed by peptide affinity purification
Conjugation:	Unconjugated
Storage:	Store undiluted at 2-8°C for one month or (in aliquots) at -20°C for longer. Avoid repeated freezing and thawing.
Stability:	Shelf life: one year from despatch.
Gene Name:	neuroblastoma breakpoint family member 5, pseudogene
Database Link:	<a href="#">Q86XG9</a>
Synonyms:	Neuroblastoma breakpoint family member 5
Note:	<b>Molecular Weight:</b> 40546 Da



[View online »](#)

**Product images:**

Western blot analysis of NBPF5 Antibody (C-term) in Jurkat cell line lysates (35ug/lane). This demonstrates the NBPF5 antibody detected the NBPF5 protein (arrow).



Flow cytometric analysis of Jurkat cells using NBPF5 Antibody (C-term) (right histogram) compared to a negative control cell (left histogram). FITC-conjugated donkey-anti-rabbit secondary antibodies were used for the analysis.