

## Product datasheet for **AP52817PU-N**

### p95 NBS1 (NBN) (C-term) Rabbit Polyclonal Antibody

#### Product data:

Product Type:	Primary Antibodies
Applications:	FC, IF, WB
Recommended Dilution:	<b>ELISA:</b> 1/1000. <b>Western Blot:</b> 1/100-1/500. <b>Flow Cytometry:</b> 1/10-1/50. <b>Immunofluorescence:</b> 1/10-1/50.
Reactivity:	Human
Host:	Rabbit
Isotype:	Ig
Clonality:	Polyclonal
Immunogen:	KLH conjugated synthetic peptide between 609-638 amino acids from the C-terminal region of Human Nibrin
Specificity:	This antibody recognizes Human Nibrin (C-term).
Formulation:	PBS containing 0.09% (W/V) Sodium Azide as preservative State: Aff - Purified State: Liquid purified Ig fraction
Concentration:	lot specific
Purification:	Protein A column, followed by peptide affinity purification
Conjugation:	Unconjugated
Storage:	Store undiluted at 2-8°C for one month or (in aliquots) at -20°C for longer. Avoid repeated freezing and thawing.
Stability:	Shelf life: one year from despatch.
Gene Name:	nibrin
Database Link:	<a href="#">Entrez Gene 4683 Human O60934</a>



[View online »](#)

**Background:**

Mutations in this gene are associated with Nijmegen breakage syndrome, an autosomal recessive chromosomal instability syndrome characterized by microcephaly, growth retardation, immunodeficiency, and cancer predisposition. The encoded protein is a member of the MRE11/RAD50 double-strand break repair complex which consists of 5 proteins. This gene product is thought to be involved in DNA double-strand break repair and DNA damage-induced checkpoint activation.

**Synonyms:**

NBN, NBS, NBS1, P95

**Note:**

**Molecular Weight:** 84959 Da

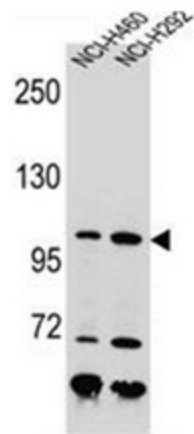
**Protein Families:**

Druggable Genome

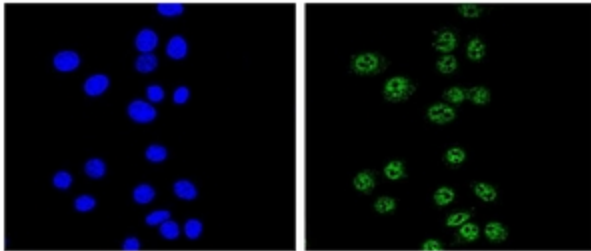
**Protein Pathways:**

Homologous recombination

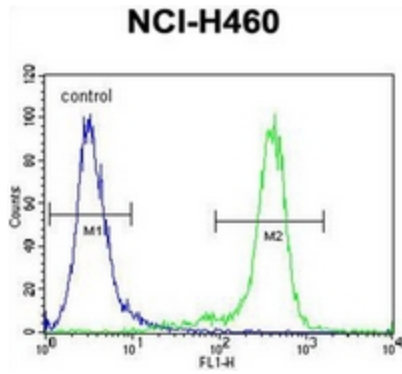
**Product images:**



Western blot analysis of Nibrin Antibody (C-term) in NCI-H460, NCI-H292 cell line lysates (35ug/lane).



Confocal immunofluorescent analysis of Nibrin Antibody (C-term) with HeLa cell followed by Alexa Fluor<sup>®</sup>488-conjugated Goat anti-Rabbit IgG (green). DAPI was used to stain the cell nuclear (blue).



Flow cytometric analysis of NCI-H460 cells using Nibrin Antibody (C-term) (right histogram) compared to a negative control cell (left histogram). FITC-conjugated goat-anti-rabbit secondary antibodies were used for the analysis.