

Product datasheet for **AP52815PU-N**

N acetyl transferase 5 (NAA20) (C-term) Rabbit Polyclonal Antibody

Product data:

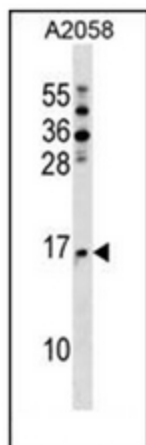
Product Type:	Primary Antibodies
Applications:	WB
Recommended Dilution:	ELISA: 1/1000. Western Blot: 1/100-1/500.
Reactivity:	Human
Host:	Rabbit
Isotype:	Ig
Clonality:	Polyclonal
Immunogen:	KLH conjugated synthetic peptide between 126-155 amino acids from the C-terminal region of human NAT5
Specificity:	This antibody recognizes Human NAT5 (C-term).
Formulation:	PBS containing 0.09% (W/V) Sodium Azide as preservative State: Aff - Purified State: Liquid purified Ig fraction
Concentration:	lot specific
Purification:	Protein A column, followed by peptide affinity purification
Conjugation:	Unconjugated
Storage:	Store undiluted at 2-8°C for one month or (in aliquots) at -20°C for longer. Avoid repeated freezing and thawing.
Stability:	Shelf life: one year from despatch.
Gene Name:	N(alpha)-acetyltransferase 20, NatB catalytic subunit
Database Link:	Entrez Gene 51126 Human P61599
Background:	NAT5 is a component of N-acetyltransferase complex B (NatB). Human NatB performs cotranslational N(alpha)-terminal acetylation of methionine residues when they are followed by asparagine (Starheim et al., 2008 [PubMed 18570629]). [supplied by OMIM].
Synonyms:	NAA20, N-alpha-acetyltransferase 20, NatB catalytic subunit



[View online »](#)

Note: **Molecular Weight:** 20368 Da

Product images:



Western blot analysis of NAT5 Antibody (C-term) in A2058 cell line lysates (35ug/lane). This demonstrates the NAT5 antibody detected the NAT5 protein (arrow).