

Product datasheet for **AP52814PU-N**

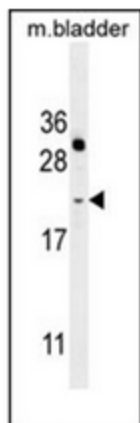
NAT14 (N-term) Rabbit Polyclonal Antibody

Product data:

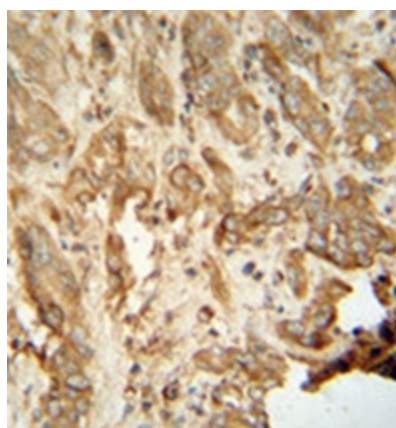
Product Type:	Primary Antibodies
Applications:	IHC, WB
Recommended Dilution:	ELISA: 1/1000. Western Blot: 1/100-1/500. Immunohistochemistry on Paraffin Sections: 1/50-1/100.
Reactivity:	Human, Mouse
Host:	Rabbit
Isotype:	Ig
Clonality:	Polyclonal
Immunogen:	KLH conjugated synthetic peptide between 12-41 amino acids from the N-terminal region of Human NAT14.
Specificity:	This antibody recognizes Human and Mouse NAT14 (N-term).
Formulation:	PBS containing 0.09% (W/V) Sodium Azide as preservative State: Aff - Purified State: Liquid purified Ig fraction
Concentration:	lot specific
Purification:	Protein A column, followed by peptide affinity purification
Conjugation:	Unconjugated
Storage:	Store undiluted at 2-8°C for one month or (in aliquots) at -20°C for longer. Avoid repeated freezing and thawing.
Stability:	Shelf life: one year from despatch.
Gene Name:	N-acetyltransferase 14 (putative)
Database Link:	Entrez Gene 57106 Human Q8WUY8
Synonyms:	NAT14, KLP1, N-acetyltransferase 14, EC 2.3.1, K562 cell-derived leucine-zipper-like protein 1
Note:	Molecular Weight: 21650 Da
Protein Families:	Transmembrane



[View online »](#)

Product images:

Western blot analysis of NAT14 Antibody (N-term) in mouse bladder tissue lysates (35ug/lane). This demonstrates the EKI2 antibody detected the EKI2 protein (arrow).



Immunohistochemistry analysis in formalin fixed and paraffin embedded human hepatocarcinoma reacted with NAT14 Antibody (N-term), which was peroxidase conjugated to the secondary antibody and followed by DAB staining. This data demonstrates the use of the NAT14 antibody (N-term) for immunohistochemistry. Clinical relevance has not been evaluated.