

## Product datasheet for **AP52813PU-N**

### MAK3 (NAA30) (C-term) Rabbit Polyclonal Antibody

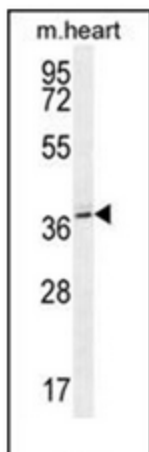
#### Product data:

Product Type:	Primary Antibodies
Applications:	IHC, WB
Recommended Dilution:	<b>ELISA:</b> 1/1000. <b>Western Blot:</b> 1/100-1/500. <b>Immunohistochemistry on Paraffin Sections:</b> 1/10-1/50.
Reactivity:	Human, Mouse
Host:	Rabbit
Isotype:	Ig
Clonality:	Polyclonal
Immunogen:	KLH conjugated synthetic peptide between 322-350 amino acids from the C-terminal region of human NAT12
Specificity:	This antibody recognizes Human and Mouse NAT12 (C-term).
Formulation:	PBS containing 0.09% (W/V) Sodium Azide as preservative State: Aff - Purified State: Liquid purified Ig fraction
Concentration:	lot specific
Purification:	Protein A column, followed by peptide affinity purification
Conjugation:	Unconjugated
Storage:	Store undiluted at 2-8°C for one month or (in aliquots) at -20°C for longer. Avoid repeated freezing and thawing.
Stability:	Shelf life: one year from despatch.
Gene Name:	N(alpha)-acetyltransferase 30, NatC catalytic subunit
Database Link:	<a href="#">Entrez Gene 70646 Mouse</a> <a href="#">Entrez Gene 122830 Human</a> <a href="#">Q147X3</a>
Synonyms:	N-acetyltransferase MAK3 homolog, C14orf35, MAK3
Note:	<b>Molecular Weight:</b> 39320 Da

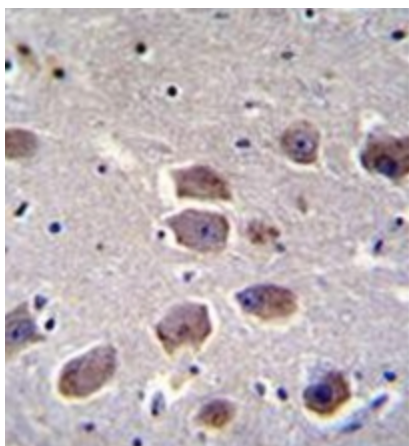


[View online »](#)

## Product images:



Western blot analysis of NAT12 Antibody (C-term) in mouse heart tissue lysates (35ug/lane). This demonstrates the NAT12 antibody detected the NAT12 protein (arrow).



Immunohistochemistry analysis in formalin fixed and paraffin embedded human brain tissue reacted with NAT12 Antibody (C-term), which was peroxidase conjugated to the secondary antibody and followed by DAB staining.