

Product datasheet for **AP52810PU-N**

NARG1 (NAA15) (N-term) Rabbit Polyclonal Antibody

Product data:

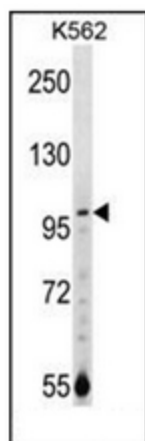
Product Type:	Primary Antibodies
Applications:	WB
Recommended Dilution:	ELISA: 1/1000. Western Blot: 1/100-1/500.
Reactivity:	Human
Host:	Rabbit
Isotype:	Ig
Clonality:	Polyclonal
Immunogen:	KLH conjugated synthetic peptide between 156-185 amino acids from the N-terminal region of human NARG1
Specificity:	This antibody recognizes Human NARG1 (N-term).
Formulation:	PBS containing 0.09% (W/V) Sodium Azide as preservative State: Aff - Purified State: Liquid purified Ig fraction
Concentration:	lot specific
Purification:	Protein A column, followed by peptide affinity purification
Conjugation:	Unconjugated
Storage:	Store undiluted at 2-8°C for one month or (in aliquots) at -20°C for longer. Avoid repeated freezing and thawing.
Stability:	Shelf life: one year from despatch.
Gene Name:	N(alpha)-acetyltransferase 15, NatA auxiliary subunit
Database Link:	Entrez Gene 80155 Human Q9BXJ9
Background:	This gene encodes a protein of unknown function. However, similarity to proteins in yeast and other species suggests that this protein may be an N-acetyltransferase.
Synonyms:	GA19, NATH, TBDN100
Note:	Molecular Weight: 101272 Da



[View online »](#)

Protein Families: Druggable Genome, Transcription Factors

Product images:



Western blot analysis of NARG1 Antibody (N-term) in K562 cell line lysates (35ug/lane). This demonstrates the NARG1 antibody detected the NARG1 protein (arrow).