

## Product datasheet for **AP52809PU-N**

### CIAO3 (Center) Rabbit Polyclonal Antibody

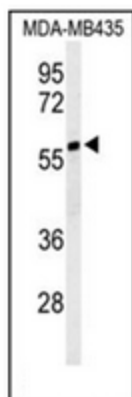
#### Product data:

Product Type:	Primary Antibodies
Applications:	FC, WB
Recommended Dilution:	<b>ELISA:</b> 1/1000. <b>Western Blot:</b> 1/100-1/500. <b>Flow Cytometry:</b> 1/10-1/50.
Reactivity:	Human
Host:	Rabbit
Isotype:	Ig
Clonality:	Polyclonal
Immunogen:	KLH conjugated synthetic peptide between 247~277 amino acids from the Central region of human NARFL
Specificity:	This antibody recognizes Human NARFL (center).
Formulation:	PBS containing 0.09% (W/V) Sodium Azide as preservative State: Aff - Purified State: Liquid purified Ig fraction
Concentration:	lot specific
Purification:	Protein A column, followed by peptide affinity purification
Conjugation:	Unconjugated
Storage:	Store undiluted at 2-8°C for one month or (in aliquots) at -20°C for longer. Avoid repeated freezing and thawing.
Stability:	Shelf life: one year from despatch.
Gene Name:	nuclear prelamin A recognition factor like
Database Link:	<a href="#">Entrez Gene 64428 Human Q9H6Q4</a>
Synonyms:	PRN
Note:	<b>Molecular Weight:</b> 53020 Da

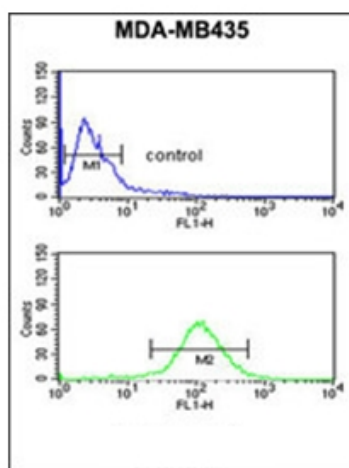


[View online »](#)

## Product images:



Western blot analysis of NARFL Antibody (Center) in MDA-MB435 cell line lysates (35ug/lane). NARFL (arrow) was detected using the purified Pab.



Flow cytometric analysis of MDA-MB435 cells using NARFL Antibody (Center) (bottom histogram) compared to a negative control cell (top histogram). FITC-conjugated goat-anti-rabbit secondary antibodies were used for the analysis.