

## Product datasheet for **AP52806PU-N**

### APPBP1 (NAE1) (Center) Rabbit Polyclonal Antibody

#### Product data:

Product Type:	Primary Antibodies
Applications:	IHC, WB
Recommended Dilution:	<b>ELISA:</b> 1/1000. <b>Western Blot:</b> 1/100-1/500. <b>Immunohistochemistry on Paraffin Sections:</b> 1/10-1/50.
Reactivity:	Human
Host:	Rabbit
Isotype:	Ig
Clonality:	Polyclonal
Immunogen:	KLH conjugated synthetic peptide between 171-200 amino acids from the Central region of human APPBP1
Specificity:	This antibody recognizes Human APPBP1 (Center).
Formulation:	PBS containing 0.09% (W/V) Sodium Azide as preservative State: Aff - Purified State: Liquid purified Ig fraction
Concentration:	lot specific
Purification:	Protein A column, followed by peptide affinity purification
Conjugation:	Unconjugated
Storage:	Store undiluted at 2-8°C for one month or (in aliquots) at -20°C for longer. Avoid repeated freezing and thawing.
Stability:	Shelf life: one year from despatch.
Gene Name:	Homo sapiens NEDD8 activating enzyme E1 subunit 1 (NAE1), transcript variant 2
Database Link:	<a href="#">Entrez Gene 8883 Human Q13564</a>



[View online »](#)

**Background:**

The protein encoded by this gene binds to the beta-amyloid precursor protein. Beta-amyloid precursor protein is a cell surface protein with signal-transducing properties, and it is thought to play a role in the pathogenesis of Alzheimer's disease. In addition, the encoded protein can form a heterodimer with UBE1C and bind and activate NEDD8, a ubiquitin-like protein. This protein is required for cell cycle progression through the S/M checkpoint. Three transcript variants encoding different isoforms have been found for this gene.

**Synonyms:**

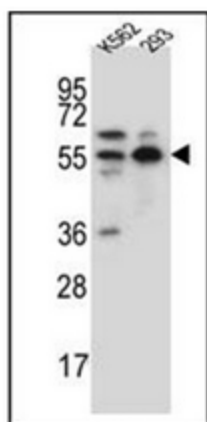
NAE1, HPP1

**Note:**

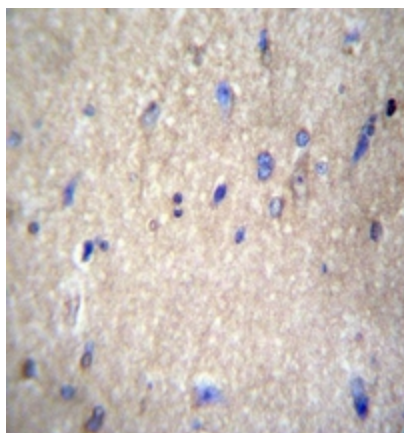
**Molecular Weight:** 60246 Da

**Protein Pathways:**

Alzheimer's disease

**Product images:**


Western blot analysis of APPBP1 Antibody (Center) in K562, 293 cell line lysates (35ug/lane).



Immunohistochemistry analysis in formalin fixed and paraffin embedded human brain tissue reacted with APPBP1 Antibody (Center), which was peroxidase conjugated to the secondary antibody and followed by DAB staining.