

## Product datasheet for **AP52805PU-N**

### **BTBD14A (NACC2) (C-term) Rabbit Polyclonal Antibody**

#### **Product data:**

Product Type:	Primary Antibodies
Applications:	WB
Recommended Dilution:	<b>ELISA:</b> 1/1000. <b>Western Blot:</b> 1/100-1/500.
Reactivity:	Human
Host:	Rabbit
Isotype:	Ig
Clonality:	Polyclonal
Immunogen:	KLH conjugated synthetic peptide between 472-502 amino acids from the C-terminal region of human NACC2 / BTBD14A
Specificity:	This antibody recognizes Human NACC2 / BTBD14A (C-term).
Formulation:	PBS containing 0.09% (W/V) Sodium Azide as preservative State: Aff - Purified State: Liquid purified Ig fraction
Concentration:	lot specific
Purification:	Protein A column, followed by peptide affinity purification
Conjugation:	Unconjugated
Storage:	Store undiluted at 2-8°C for one month or (in aliquots) at -20°C for longer. Avoid repeated freezing and thawing.
Stability:	Shelf life: one year from despatch.
Gene Name:	NACC family member 2
Database Link:	<a href="#">Entrez Gene 138151 Human Q96BF6</a>



[View online »](#)

**Background:**

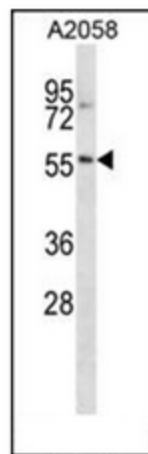
BTBD14A (BTB/POZ domain-containing protein 14A), also known as BTBD14, is a 587 amino acid protein that contains one BTB/POZ domain. The BTB/POZ domain mediates homomeric and heteromeric POZ-POZ interactions and is common to transcriptional regulators involved in chromatin modeling. In several BTB/POZ containing proteins, including BCL-6 and the promyelocytic leukemia zinc-finger (PLZF) oncoprotein, this domain interacts with the SMRT/N-CoR-mSin3A HDAC complex and is directly involved in repressing and silencing gene transcription. When this domain is deleted, as with the oncogenic PLZF-RAR chimera of promyelocytic leukemias, this transcriptional repression is attenuated. This suggests that BTBD14A may play a role in transcription regulation.

**Synonyms:**

BEND9; BTBD14; BTBD14A; MGC23427; OTTHUMP00000022564

**Note:**

**Molecular Weight:** 62837 Da

**Product images:**

Western blot analysis of NACC2 / BTBD14A Antibody (C-term) in A2058 cell line lysates (35ug/lane).