

Product datasheet for **AP52803PU-N**

MYT1 (N-term) Rabbit Polyclonal Antibody

Product data:

Product Type:	Primary Antibodies
Applications:	WB
Recommended Dilution:	Western blot: 1/100-1/500. Enzyme immunoassay: 1/1000.
Reactivity:	Human
Host:	Rabbit
Isotype:	Ig
Clonality:	Polyclonal
Immunogen:	Synthetic peptide - KLH conjugated - corresponding to the N-terminal region (between 1-30aa) of human Myelin transcription factor (MYT1)
Specificity:	This antibody recognizes human Myelin transcription factor at N-term.
Formulation:	PBS with 0.09% (W/V) Sodium azide State: Aff - Purified State: Liquid purified Ig fraction
Concentration:	lot specific
Purification:	Purified through a Protein A column followed by peptide affinity purification
Conjugation:	Unconjugated
Storage:	Store undiluted at 2-8°C for one month or (in aliquots) at -20°C for longer. Avoid repeated freezing and thawing.
Stability:	Shelf life: one year from despatch.
Gene Name:	myelin transcription factor 1
Database Link:	Entrez Gene 4661 Human Q01538
Background:	Myelin transcription factor is a member of a family of neural specific, zinc finger-containing DNA-binding proteins. The protein binds to the promoter regions of proteolipid proteins of the central nervous system and plays a role in the developing nervous system.
Synonyms:	MyT1, MyTI, MYT1, KIAA0835, KIAA1050, MTF1, MYTI, PLPB1, Proteolipid protein-binding protein

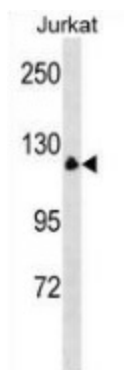


[View online »](#)

Note: **Molecular Weight:** 122329 Da

Protein Families: Transcription Factors

Product images:



Western blot analysis in Jurkat cell line lysates (35ug/lane) using Myelin transcription factor antibody. (N-term). This demonstrates this antibody detected the MYT1 protein (arrow).