

Product datasheet for **AP52802PU-N**

MYSM1 (N-term) Rabbit Polyclonal Antibody

Product data:

Product Type:	Primary Antibodies
Applications:	FC, WB
Recommended Dilution:	Flow cytometry: 1/10-1/50. Western blot: 1/100-1/500. Enzyme immunoassay: 1/1000.
Reactivity:	Human, Mouse
Host:	Rabbit
Isotype:	Ig
Clonality:	Polyclonal
Immunogen:	Synthetic peptide - KLH conjugated - corresponding to the N-terminal region (between 118-147aa) of human MYSM1
Specificity:	This antibody recognizes MYSM1 at N-term.
Formulation:	PBS with 0.09% (W/V) Sodium azide State: Aff - Purified State: Liquid purified Ig fraction
Concentration:	lot specific
Purification:	Purified through a Protein A column followed by peptide affinity purification
Conjugation:	Unconjugated
Storage:	Store undiluted at 2-8°C for one month or (in aliquots) at -20°C for longer. Avoid repeated freezing and thawing.
Stability:	Shelf life: one year from despatch.
Gene Name:	Myb like, SWIRM and MPN domains 1
Database Link:	Entrez Gene 320713 Mouse Entrez Gene 114803 Human Q5VWJ2



[View online »](#)

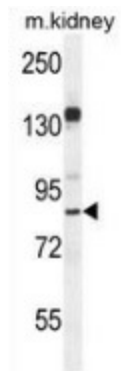
Background: Metalloprotease that specifically deubiquitinates monoubiquitinated histone H2A, a specific tag for epigenetic transcriptional repression, thereby acting as a coactivator. Preferentially deubiquitinates monoubiquitinated H2A in hyperacetylated nucleosomes. Deubiquitination of histone H2A leads to facilitate the phosphorylation and dissociation of histone H1 from the nucleosome. Acts as a coactivator by participating in the initiation and elongation steps of androgen receptor (AR)-induced gene activation.

Synonyms: KIAA1915

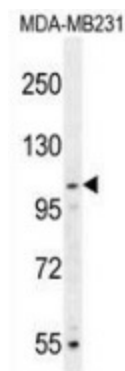
Note: **Molecular Weight:** 95032 Da

Protein Families: Protease

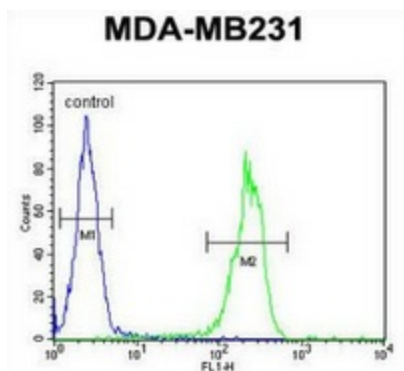
Product images:



Western blot analysis in mouse kidney tissue lysates (35ug/lane) using MYSM1 antibody. (N-term). This demonstrates this antibody detected the MYSM1 protein (arrow).



Western blot analysis in MDA-MB231 cell line lysates (35ug/lane) using MYSM1 antibody. (N-term). This demonstrates this antibody detected the MYSM1 protein (arrow).



Flow cytometric analysis of MDA-MB231 cells (right histogram) compared to a negative control cell (left histogram) using MYSM1 antibody. (N-term), followed by FITC-conjugated goat-anti-rabbit secondary antibodies.