

Product datasheet for **AP52801PU-N**

Myogenin (MYOG) (N-term) Rabbit Polyclonal Antibody

Product data:

Product Type:	Primary Antibodies
Applications:	WB
Recommended Dilution:	Western blot: 1/100-1/500. Enzyme immunoassay: 1/1000.
Reactivity:	Human, Mouse
Host:	Rabbit
Isotype:	Ig
Clonality:	Polyclonal
Immunogen:	Synthetic peptide - KLH conjugated - corresponding to the N-terminal region (between 1-30aa) of human Myogenin
Specificity:	This antibody recognizes Myogenin at N-term.
Formulation:	PBS with 0.09% (W/V) Sodium azide State: Aff - Purified State: Liquid purified Ig fraction
Concentration:	lot specific
Purification:	Purified through a Protein A column followed by peptide affinity purification
Conjugation:	Unconjugated
Storage:	Store undiluted at 2-8°C for one month or (in aliquots) at -20°C for longer. Avoid repeated freezing and thawing.
Stability:	Shelf life: one year from despatch.
Gene Name:	myogenin (myogenic factor 4)
Database Link:	Entrez Gene 17928 Mouse Entrez Gene 4656 Human P15173
Background:	Myogenin is a muscle-specific transcription factor that can induce myogenesis in a variety of cell types in tissue culture. It is a member of a large family of proteins related by sequence homology, the helix-loop-helix (HLH) proteins. It is essential for the development of functional skeletal muscle.
Synonyms:	MYOG, MYF4, Myogenic factor 4, BHLHC3

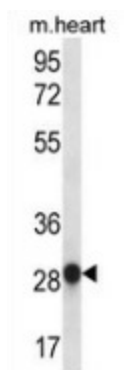


[View online »](#)

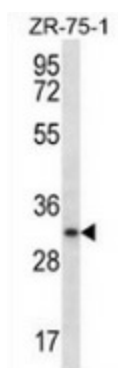
Note: **Molecular Weight:** 25037 Da

Protein Families: Druggable Genome, Transcription Factors

Product images:



Western blot analysis in mouse heart tissue lysates (35ug/lane) using Myogenin antibody. (N-term). This demonstrates this antibody detected the Myogenin protein (arrow).



Western blot analysis in ZR-75-1 cell line lysates (35ug/lane) using Myogenin antibody. (N-term). This demonstrates this antibody detected the Myogenin protein (arrow).